

FED. ROAD NO.	STATE	FED. AID PROJ.	FISCAL YEAR	SHEET NO.	TOTAL SHEETS
G	ARK.	1-30-2(69)91		34	352
JOB NO		6720			

SUMMARY OF BRIDGE QUANTITIES - JOB 6720

Bridge No. Code No. Name Plate Title	UNIT OF BRIDGE	Item No	301	302	302	303	304	*SP#805(Alt #1) 805(Alt #2) (Alt #1) Metal (Aluminum) Bridge Railing (Type A) (Alt #2) Metal (Steel) Bridge Railing (Type B)	SP # 806	SP - 806-9	812	817	817	1006	E17A	817A	*SP#805(Alt #1) 805(Alt #2) (Alt #1) Metal (Aluminum) Bridge Railing (Type B) (Alt #2) Metal (Steel) Bridge Railing (Type B)
			Item	Unclassified Excavation for Structures	Class S Concrete	Class A Concrete	Reinforcing Steel	Steel Bearing Piling (12 BP 53)	Structural Steel in Beam Spans	Preformed Joint Sealer	Bridge Name Plates (Type C)	Riprap	Concrete Riprap	Removal of Existing Bridge Structures	Dumped Riprap	Filter Blanket	Lin. Ft.
			Unit	Cu Yd	Cu Yd	Cu Yd	Lb	Lin. Ft.	Lb	Lin. Ft.	Plate	Cu Yd	Cu Yd	Comp. Item	Cu Yd	Cu Yd	Lin. Ft.
5024 X020 Blakely Creek		Bents 1 & 6		50	13.26		1,548	120							690	230	
		Bents 2-5		95	23.56	35.60	7,865										121
		Spans 1 & 5			73.69		15,598										180
		Spans 2-4			109.39		23,115										
		Totals for Bridge 5024		145	219.90	35.60	48,080	120						100 %	690	230	301
5025A X071 Blakely Creek		Bents 1 & 7		60	29.88		3,560	513	1036						655	175	
		Bents 2-4		256	33.51	119.63	15,397										
		Bent 5		148	11.5	38.37	5030										
		Bent 6			6.52		939	185	930								
		Spans 1-6			241.44		55,074		564	171,624	246.7				655	175	
5025B X071 Blakely Creek		Totals for Bridge 5025A		460	322.50	158.00	79,980	703	564	173,590	246.7				655	175	
		Bents 1 & 7		60	29.88		3,560	513	1036						655	175	
		Bents 2-4		271	33.51	129.54	15,468										
		Bent 5		134	11.5	38.36	5030										
		Bent 6			6.52		939	185	930								
5025B X071 Blakely Creek		Spans 1-6			241.44		55,073		564	171,624	246.7				655	175	
		Totals for Bridge 5025B		465	322.50	158.90	80,050	703	564	173,590	246.7				655	175	
		Bents 1 & 6		73	28.64		2,200	385	834				60	100 %	2000	530	301
		Bents 2 & 3		7	16.20	42.78	7,279										
		Bent 4		44	8.10	20.47	3,548										
5026 X071 Oak Grove Separation		Bent 5		53	8.10	19.55	3,334										
		Span 1			32.63		6,565		90	22,949	42.6						
		Spans 2 & 4			102.11		20,156		284	101,784	62.1						
		Span 3			51.77		10,528		144	52,142	31.0						
		Span 5			31.25		6,250		80	21,291	16.6						
5026 X071 Oak Grove Separation		Totals for Bridge 5026		352	275.80	82.80	40,460	385	604	199,020	106.3		60				
		Bents 1 & 6		84	36.48		3,126	665		1,321							
		Bents 2 & 5			17.48		2,214	570		2,420							
		Bents 3 & 4		160	32.78	110.20	15,636										
		Spans 1-5			93.16		46,784		590	137,909	262.8						
5027A X071 Creek & Sta 5014+06		Totals for Bridge 5027A		244	279.90	110.20	67,810	1235	390	141,710	262.8					335	
		Bents 1 & 6		84	37.26		3,127	644		1,322							
		Bents 2 & 5			17.48		2,215	546		2,450							
		Bents 3 & 4		151	32.78	112.80	15,843										
		Spans 1-5			202.78		49,136		410	154,023	262.8						
5027B X071 Creek & Sta 5016+16		Totals for Bridge 5027B		235	290.30	112.50	70,340	1190	410	157,420	262.8					553	
		Bents 1 & 5		50	32.74		3,808	364		994							
		Bent 2		39	11.22	17.76	3,808										
		Bent 3		45	11.10	20.69	4,199										
		Bent 4		40	10.98	20.23	4,055										
5028 X071 Hwy 171 & B-1 Interchange		Span 1			36.77		8,335		90	26.5	52.3						
		Spans 2 & 3			119.38		28,122		296	120,960	69.8						
		Span 4			43.91		10,293		108	35,053	52.3						
		Totals for Bridge 5028		174	266.10	58.70	42,320	364	494	143,560	174.4						67
		Totals for Job 6720		2015	1980.00	716.70	469,520	4700	3026	1,029,670	1379.7		7		883	147	

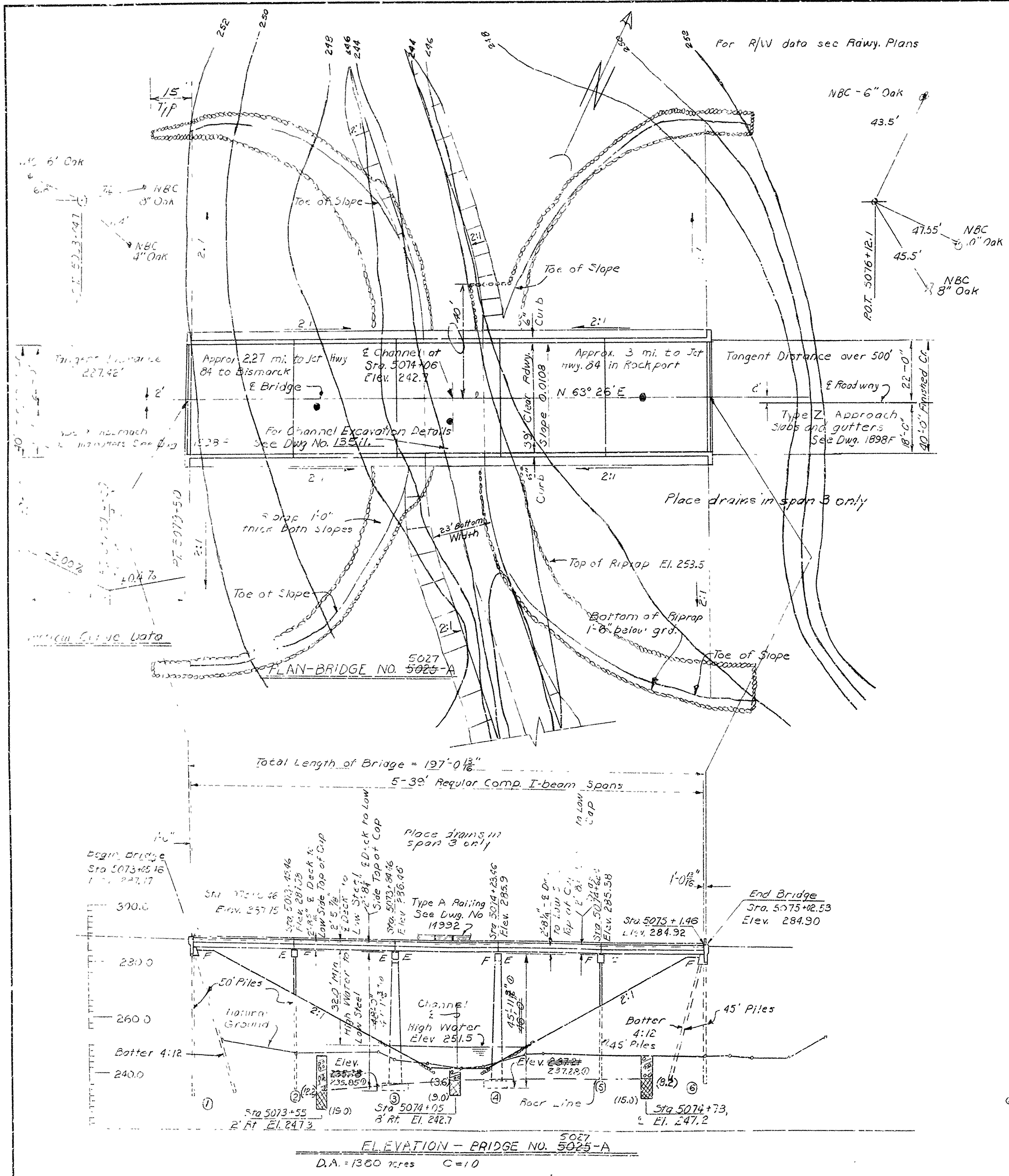
▲ Contn.: estimated 222 cu yds.
rock excavation.

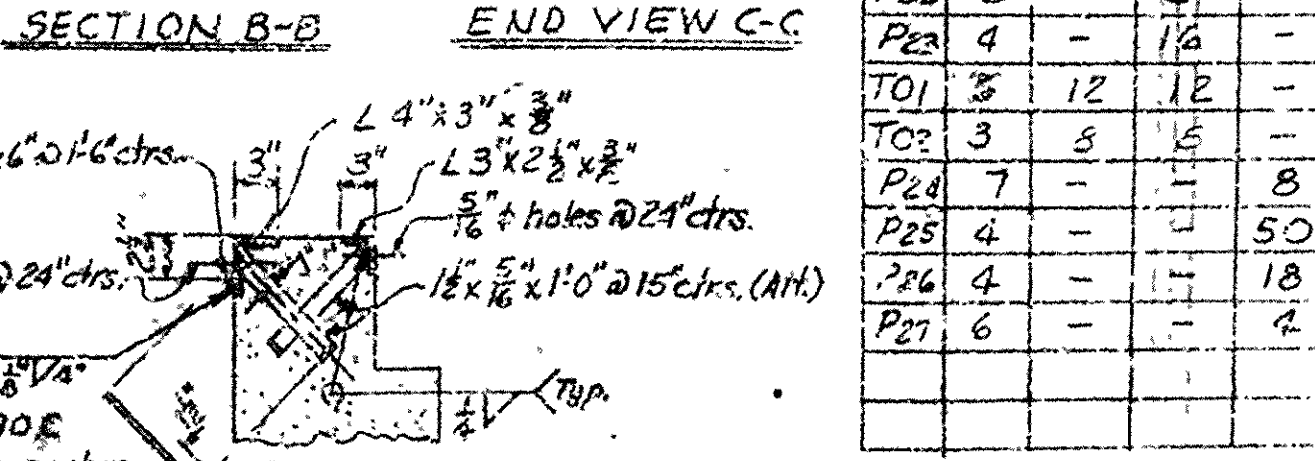
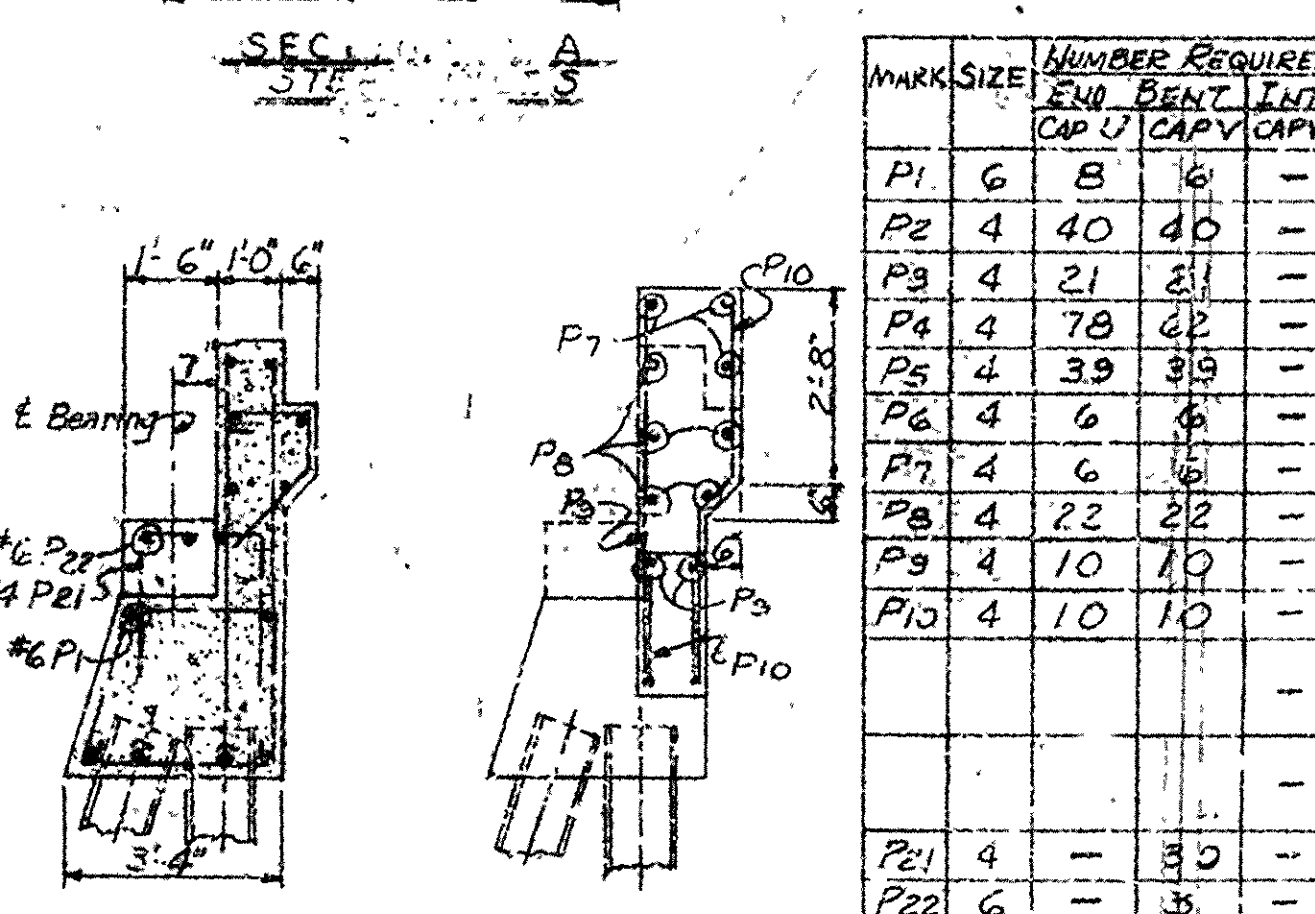
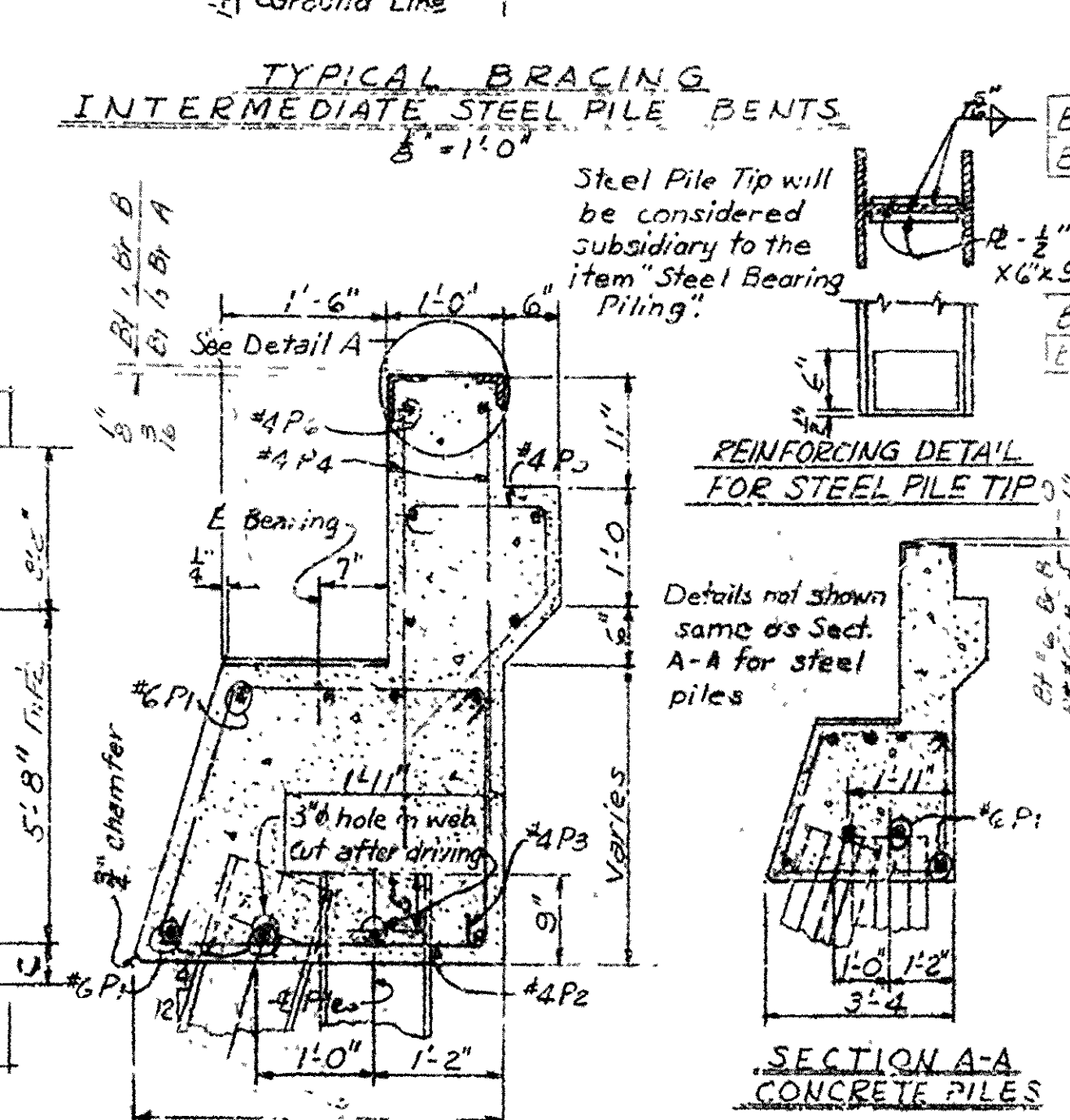
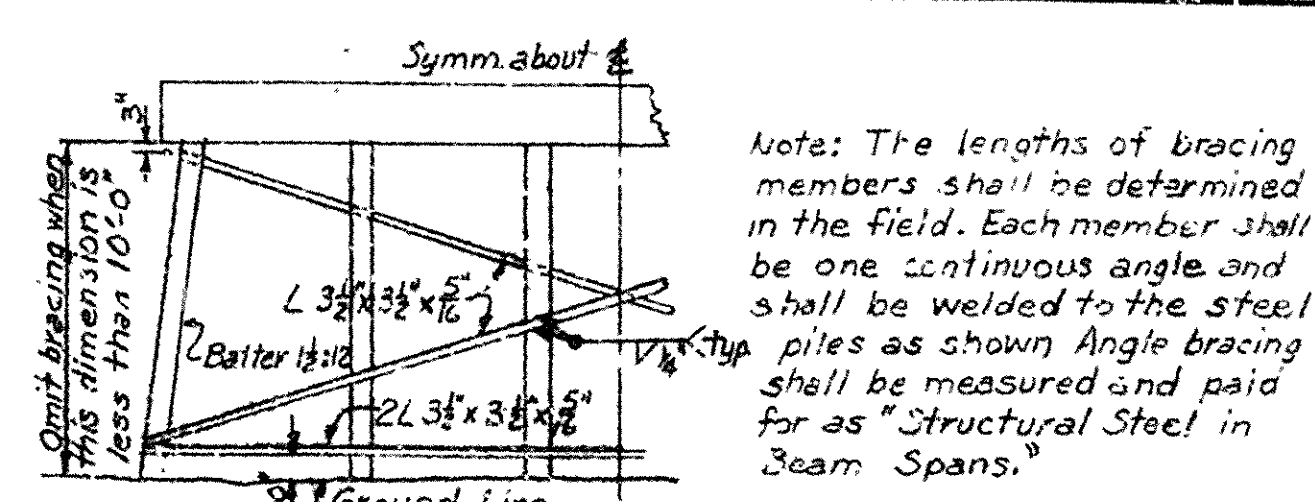
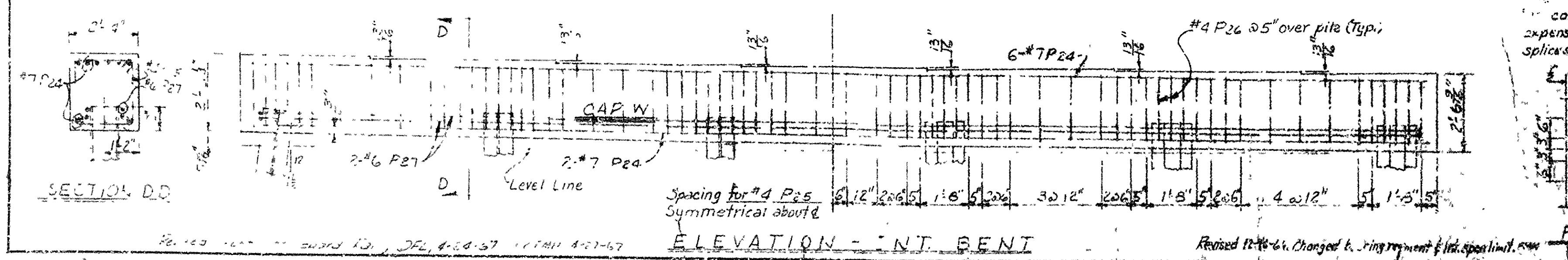
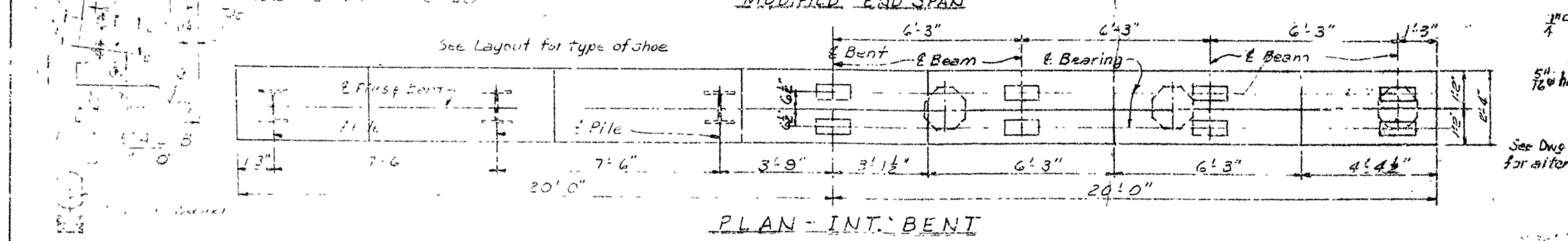
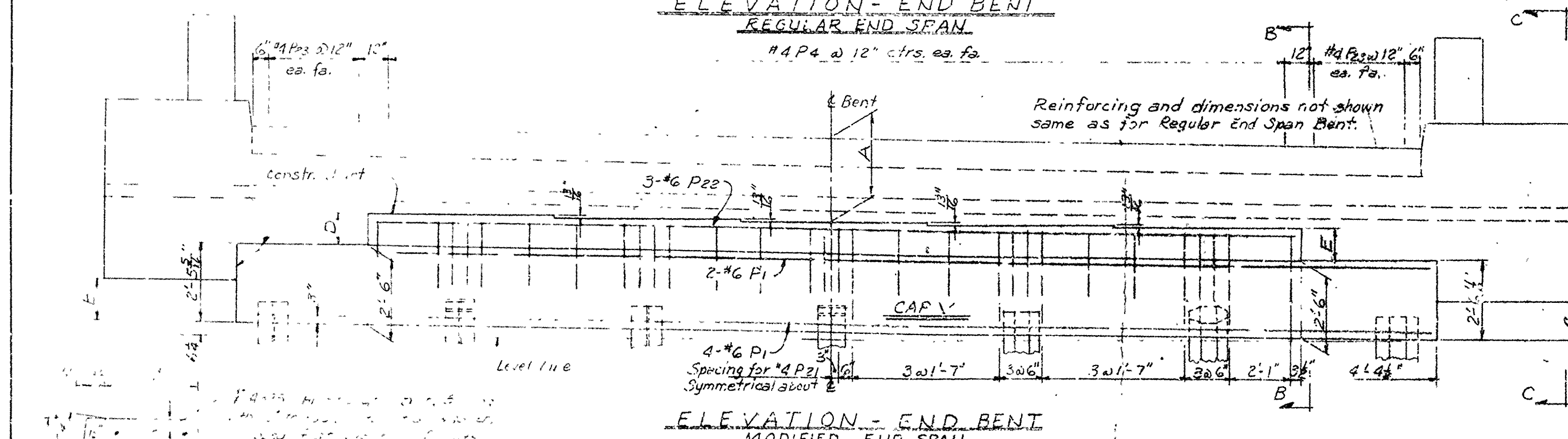
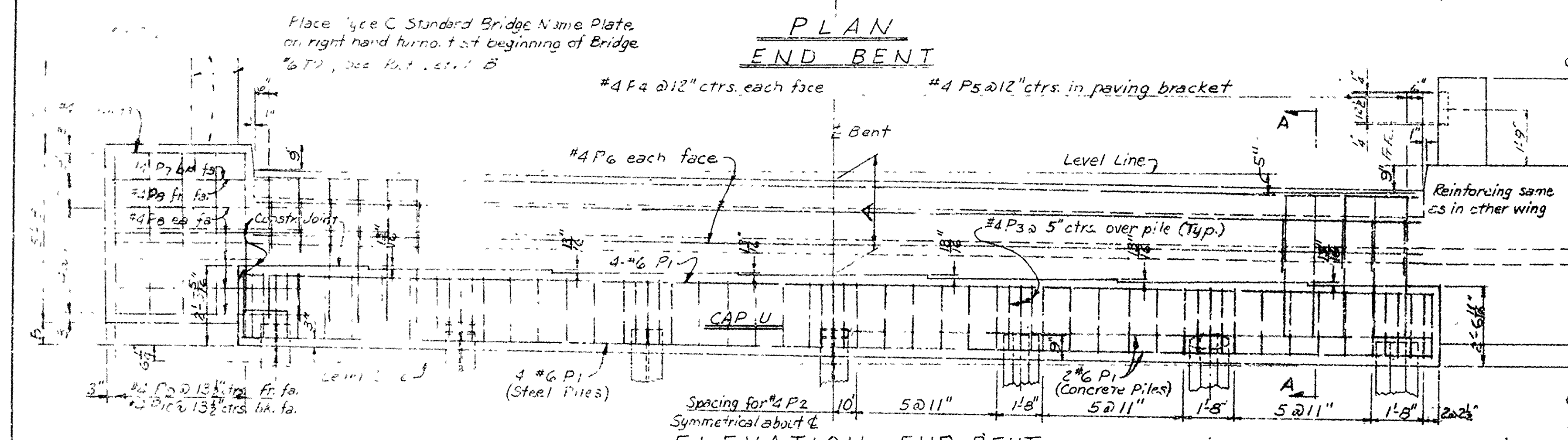
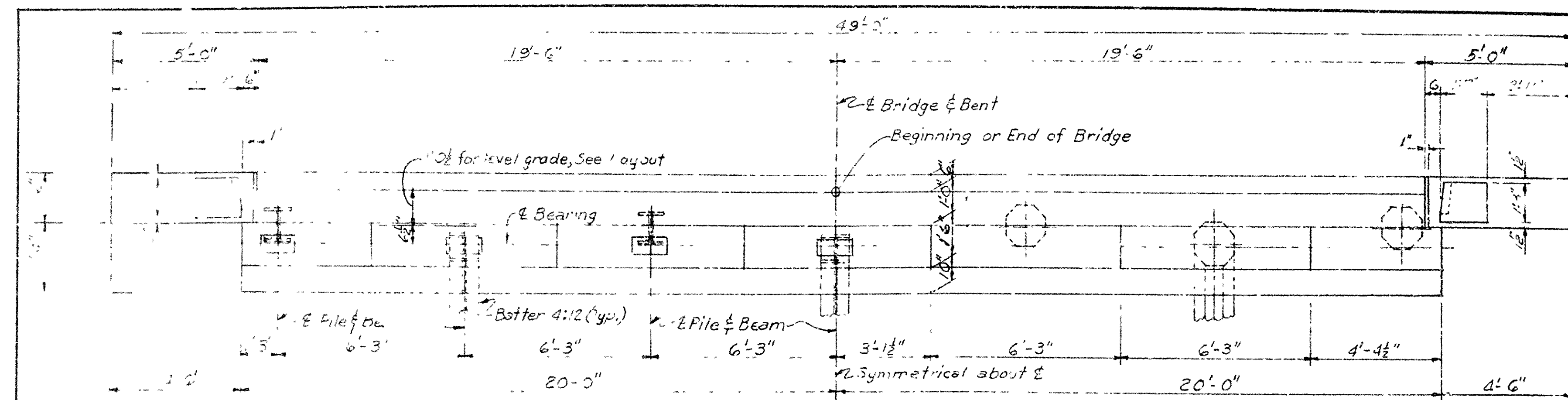
* See SP 806-10

SUMMARY OF BRIDGE QUANTITIES
SOCIAL HILL-ROCKPORT
HOT SPRING COUNTY
INT. ROUTE 3C SEC. 2
ARKANSAS STATE HIGHWAY COMMISSION
LITTLE ROCK, ARK.
DRAWN BY: DF DATE: 3-1-66
TRACED BY: FMH DATE: 3-1-66 SCALE: _____
CHECKED BY: FMH DATE: 3-1-66
BRIDGE NO. 5024, 5025A & B
BRIDGE NO. 5026, 5027A & B DRAWING NO. 13490
5028

BRIDGE ENGINEER

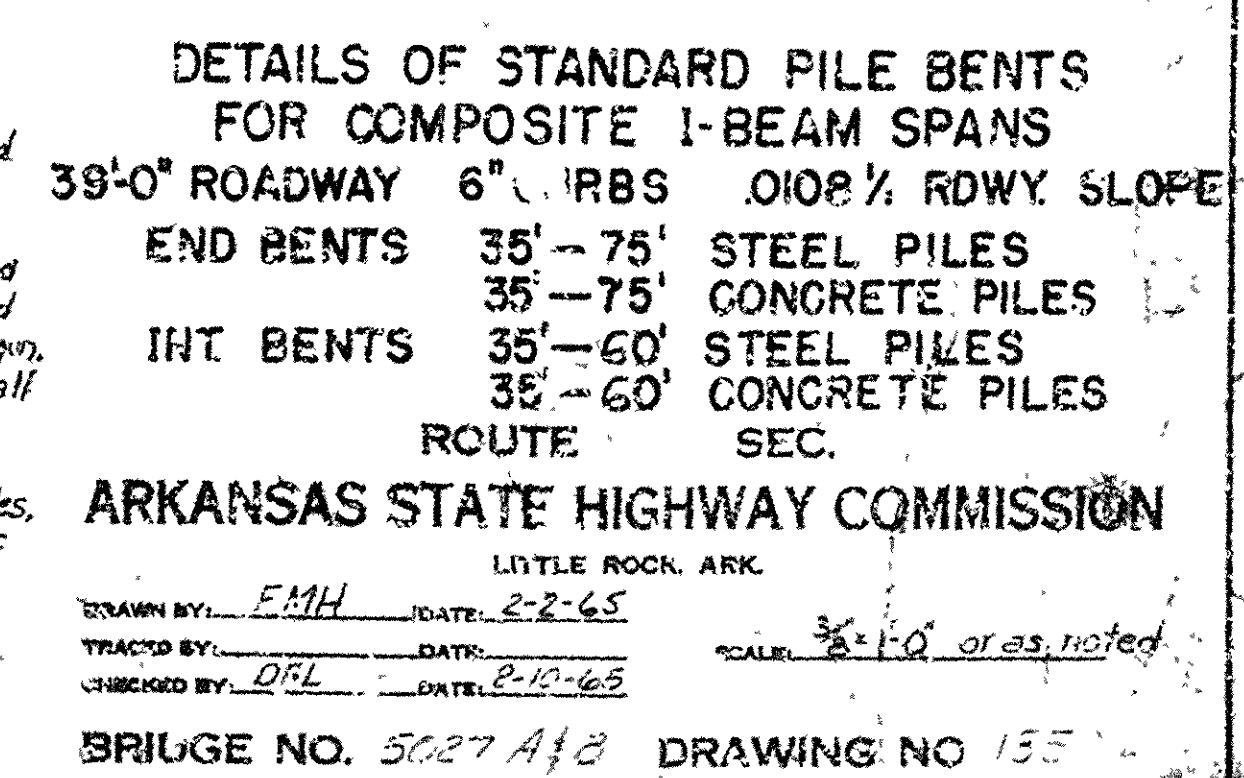
PED. ROAD NO.	AT. VTL.	FISCAL YEAR	SH. LET. NO.	TOTAL SHEETS
6	ARK.	1965	15	352
JOB NO.	672			



[illegible]

LENGTH	X	Y	PIN DIA.	BENDING DIAGRAM
39'-8"			Str.	
9'-10"	See Diagram		1 1/2"	
7'-2"	See Diagram		1 1/2"	
A+1'-6"			Str.	
4'-0"	See Diagram		1 1/2"	
39'-0"			Str.	
4'-7"			Str.	
6'-6"			Str.	
5'-4"			Str.	
5'-6"	2'-5"	2'-5"	1 1/2"	
2F+4'-4"	1'-10"	F+1'-3"	1 1/2"	
30'-10"			Str.	
A+F+1'-8"			Str.	
5'-"			Str.	
4'-4"	1'-"	1'-2"	1 1/2"	
39'-8"			Str.	
8'-9"	1'-11 1/2"	2'-1 1/2"	1 1/2"	
6'-11"	1'-11 1/2"	2'-1 1/2"	1 1/2"	
48'-6"	39'-3"	1'-8"	2 1/2"	

Dimensions are to cts. of bars.



NOTES

All concrete shall be Class S. All exposed corners to be chamfered $\frac{3}{4}"$.

Reinforcing steel shall be deformed bars of intermediate or hard grade. Shop lists and bending diagrams must be submitted and approved secured before fabrication is begun.

All structural steel except steel piles shall be ASTM A36.

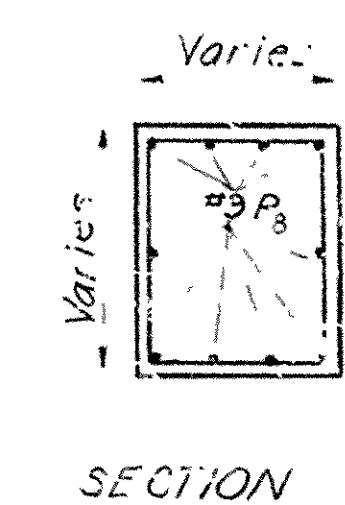
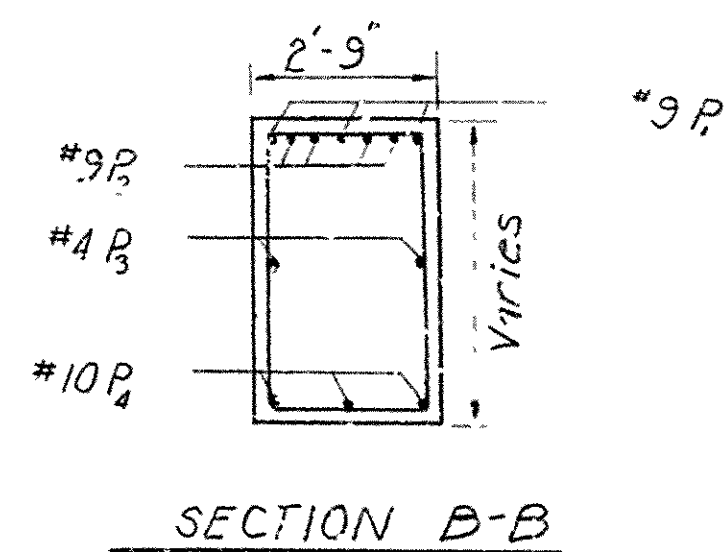
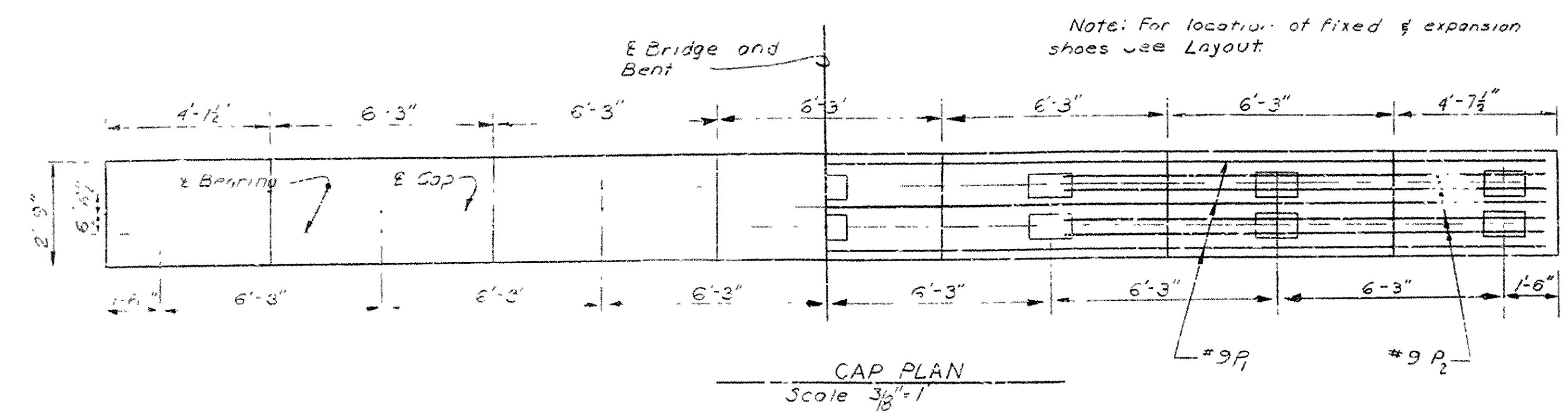
Piling shall be 12 IPS S3 Steel Bearing Piles or 14" Od. Precast concrete Piles.

Piles shall be driven to a minimum bearing of 36 tons per pile.

Beams shall be in place before back wall is poured.

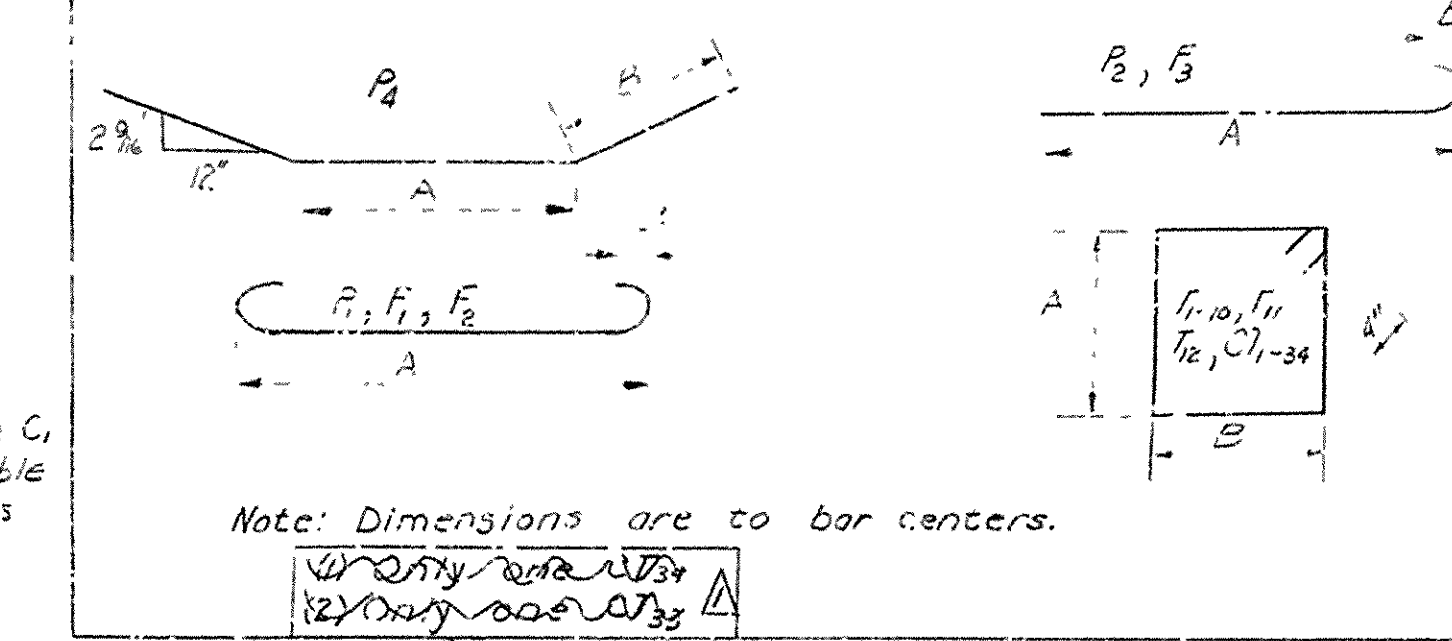
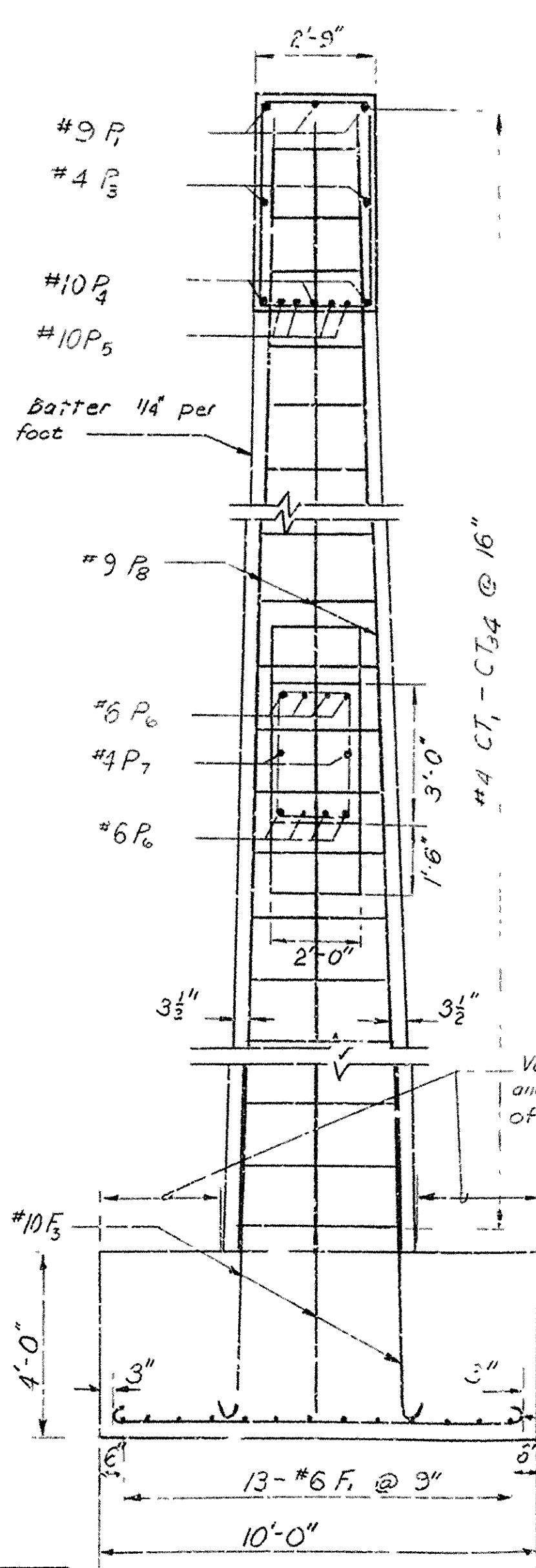
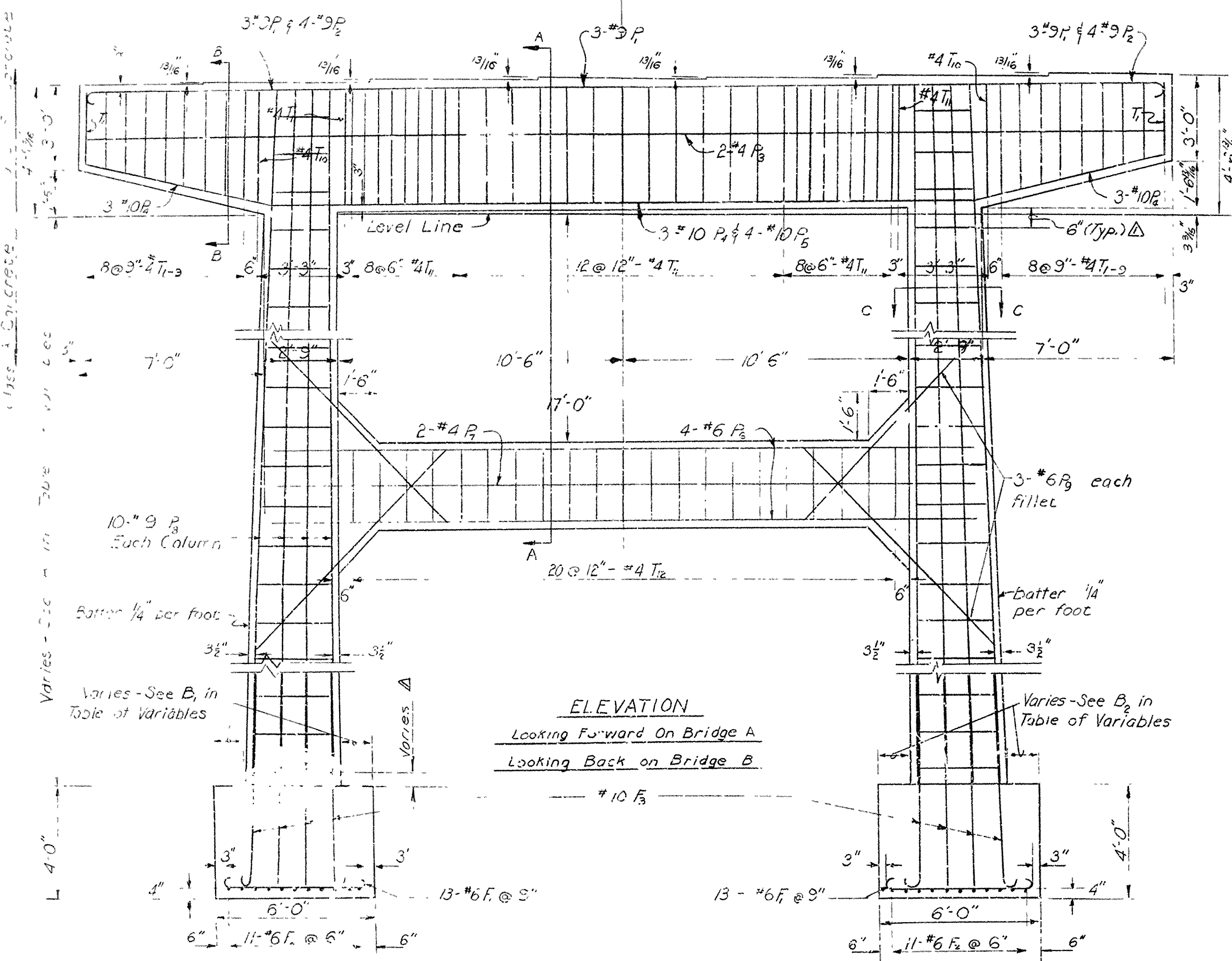
Wm. H. Jones & Son, Inc.
- 66 - P.M.H. - C.E. 401, P.3 - 66 BRIDGE DIVISION

FED. AID NO.	STATE	FED. AID PROJ. NO.	FISCAL YEAR	SHEET NO.	TOTAL SHEETS
6	ARK.	1-30-2 (38)-91		86	332
JOB NO. 6720					



BAR LIST

Mark	Size	Number Per Bent				Length	A	B	Pin Diam.
		Bridge 5021-A	Bridge 5021-B	Pier 3	Pier 4				
P	#6	3	3	3	3	2'-6"	40'-0"	10'	3"
P	#9	8	8	8	8	16'-0"	14'-9"	10"	3"
P	#4	2	2	2	2	40'-0"			Str.
P	#10	3	3	3	3	6'-11"	26'-6"	6'-11"	10"
P	#10	4	4	4	4	26'-6"			Str.
P	#6	8	8	8	8	26'-0"			Str.
P	#4	2	2	2	2	24'-4"			Str.
P	#3	20				43'-6"			Str.
P			20			41'-6"			Str.
P				20		44'-6"			Str.
P					20	42'-0"			Str.
P	#5	12	12	12	12	10'-0"			Str.
F	#5	26	26	26	26	6'-11"	5'-6"	6"	4 1/2"
F	#6	22	22	22	22	0'-11"	5'-6"	6"	4 1/2"
F	#10	20	20	20	20	3'-2"	7'-10"	11"	10"
T	#4	2 ea.	2 ea.	2 ea.	2 ea.	10'-8"	2'-10"	2'-4 1/2"	1 1/2"
T	#4	31	31	31	31	13'-7"	4'-1 1/2"	2'-4 1/2"	1 1/2"
T	#4	21	21	21	21	9'-1"	2'-7 1/2"	1'-7 1/2"	1 1/2"
CT	#4	2 ea.	2 ea.	2 ea.	2 ea.	3'-5 1/2"	2'-5 1/2"	2'-4 1/2"	1 1/2"
CT	#4	2 ea.	2 ea.	2 ea.	2 ea.	4'-5 1/2"	10'-3 1/8"	3'-3 1/2"	1 1/2"
CT	#4	2 ea.	2 ea.	2 ea.	2 ea.	14'-7 3/4"	3'-1 1/2"	3'-1 1/2"	1 1/2"
CT	#4	2 ea.	2 ea.	2 ea.	2 ea.	14'-9 1/2"	3'-3 1/4"	2'-1 1/2"	1 1/2"
CT	#4	2 ea.	2 ea.	2 ea.	2 ea.	14'-11 1/2"	3'-2 3/4"	3'-0 1/2"	1 1/2"



GENERAL NOTES

All concrete in caps shall be Class S. All concrete in columns and footings shall be Class A. All exposed corners shall be chamfered 3/4".

Reinforcing steel to be deformed bars of intermediate or hard grade. Shop lists and bending diagrams of reinforcing steel shall be submitted and approval secured before fabrication is begun.

For Details of Superstructure see Dugs. 149306 and 13506.

BEAM BUILD-UP DATA - BRIDGE A

Beam No.	Type B	Type B	Type B	Type B	Type B
Beam 1	3'-11 1/2"	3'-11 1/2"	3'-11 1/2"	3'-11 1/2"	3'-11 1/2"
Beam 2	3'-11 1/2"	3'-11 1/2"	3'-11 1/2"	3'-11 1/2"	3'-11 1/2"
Beam 3	3'-11 1/2"	3'-11 1/2"	3'-11 1/2"	3'-11 1/2"	3'-11 1/2"
Beam 4	3'-11 1/2"	3'-11 1/2"	3'-11 1/2"	3'-11 1/2"	3'-11 1/2"
Beam 5	3'-11 1/2"	3'-11 1/2"	3'-11 1/2"	3'-11 1/2"	3'-11 1/2"
Beam 6	3'-11 1/2"	3'-11 1/2"	3'-11 1/2"	3'-11 1/2"	3'-11 1/2"
Beam 7	3'-11 1/2"	3'-11 1/2"	3'-11 1/2"	3'-11 1/2"	3'-11 1/2"

TABLE OF VARIABLES

Bridge A	Bent	A	B	B ₂	Short Col.	Long Col.
3	3	33'-6"	1'-2 3/8"	1'-2 3/8"	2'-3 3/8"	2'-9 3/16"
4	4	37'-6"	1'-2 1/8"	1'-2 7/8"	2'-10 1/8"	2'-10 1/8"
3	3	40'-6"	1'-2 3/8"	1'-2 3/8"	2'-9 3/8"	2'-9 3/8"
4	4	38'-6"	1'-2 3/8"	1'-2 3/8"	2'-3 3/8"	2'-9 3/8"

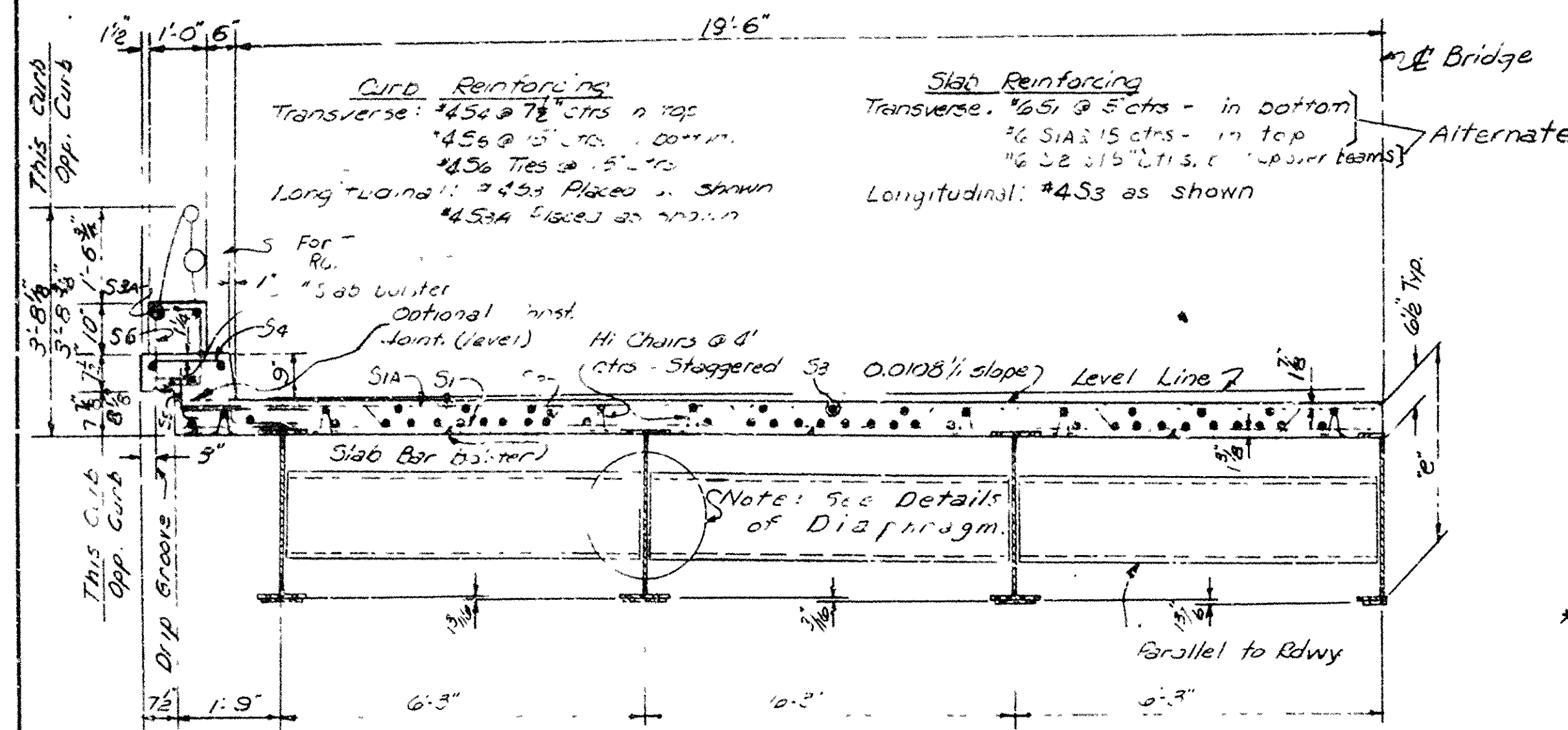
BEAM BUILD-UP DATA - BRIDGE B

Beam No.	Type B	Type B	Type B	Type B	Type B
Beam 1	3'-11 1/2"	3'-11 1/2"	3'-11 1/2"	3'-11 1/2"	3'-11 1/2"
Beam 2	3'-11 1/2"	3'-11 1/2"	3'-11 1/2"	3'-11 1/2"	3'-11 1/2"
Beam 3	3'-11 1/2"	3'-11 1/2"	3'-11 1/2"	3'-11 1/2"	3'-11 1/2"
Beam 4	3'-11 1/2"	3'-11 1/2"	3'-11 1/2"	3'-11 1/2"	3'-11 1/2"
Beam 5	3'-11 1/2"	3'-11 1/2"	3'-11 1/2"	3'-11 1/2"	3'-11 1/2"
Beam 6	3'-11 1/2"	3'-11 1/2"	3'-11 1/2"	3'-11 1/2"	3'-11 1/2"
Beam 7	3'-11 1/2"	3'-11 1/2"	3'-11 1/2"	3'-11 1/2"	3'-11 1/2"

DETAILS OF BENTS 3 & 4
BRIDGE OVER CREEK AT STA. 5074+06
AND BRIDGE OVER CREEK AT STA. 5076+16
SOCIAL HILL - ROCKPORT
HOT SPRINGS COUNTY
INT. ROUTE 30 SEC. 2
ARKANSAS STATE HIGHWAY COMMISSION
LITTLE ROCK, ARK.

DRAWN BY: FJM DATE: 3/20/66
TRACED BY: FCH DATE: 1/27/66
CHECKED BY: FCH DATE: 1/27/66
BRIDGE NO. 5027 A&B DRAWING NO. 13505

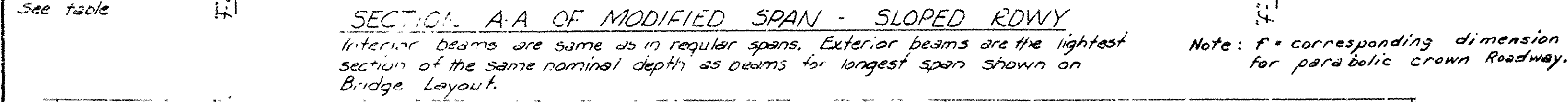
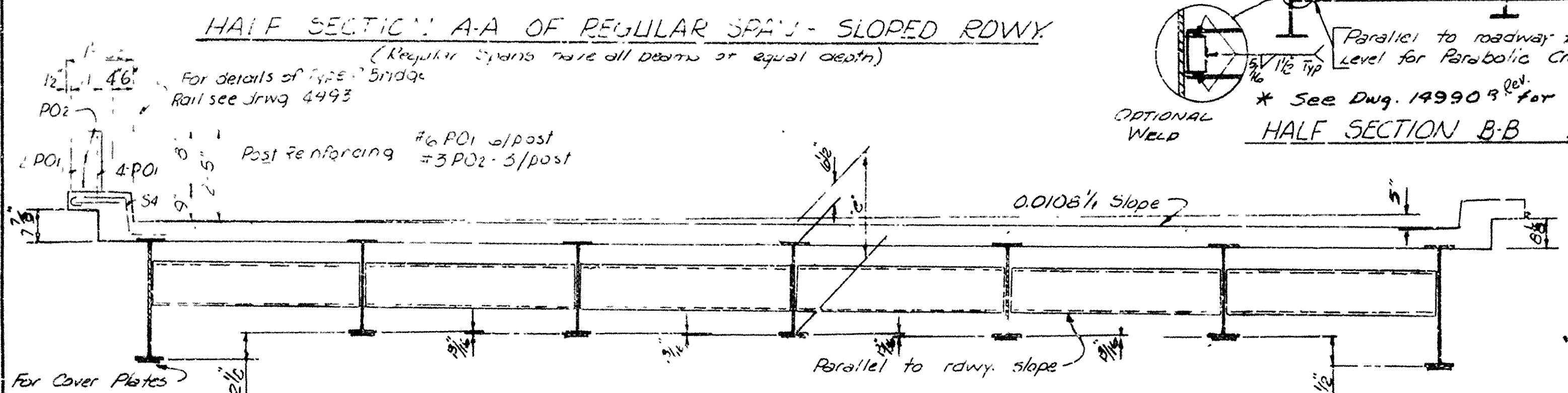
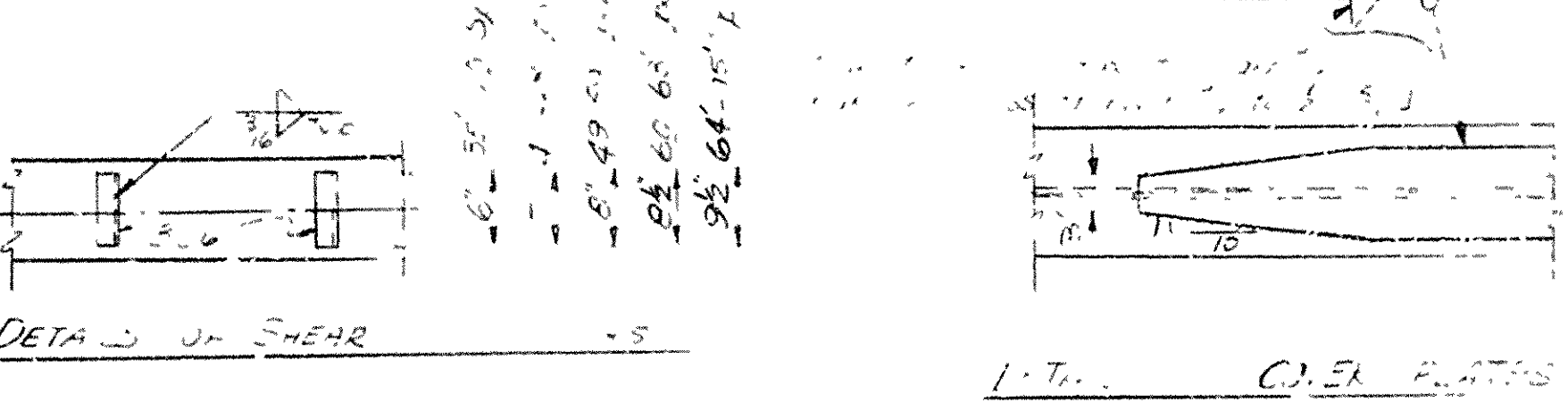
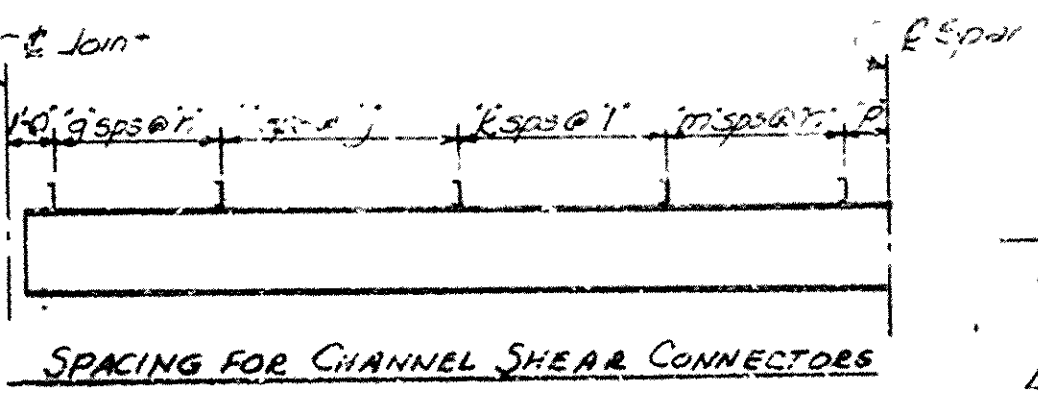
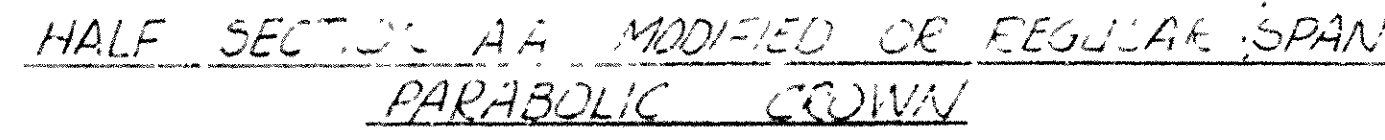
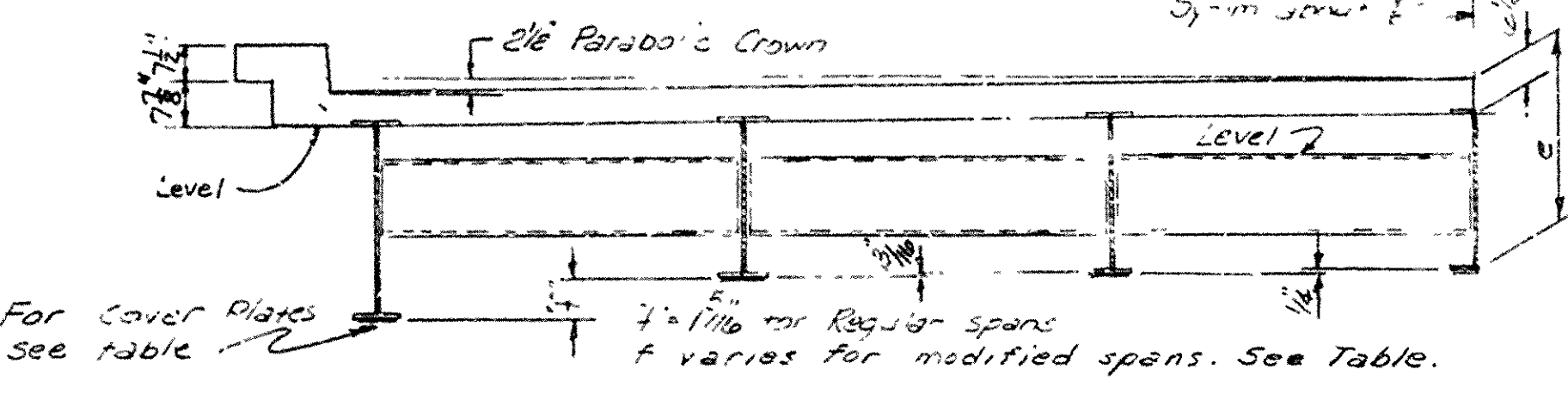
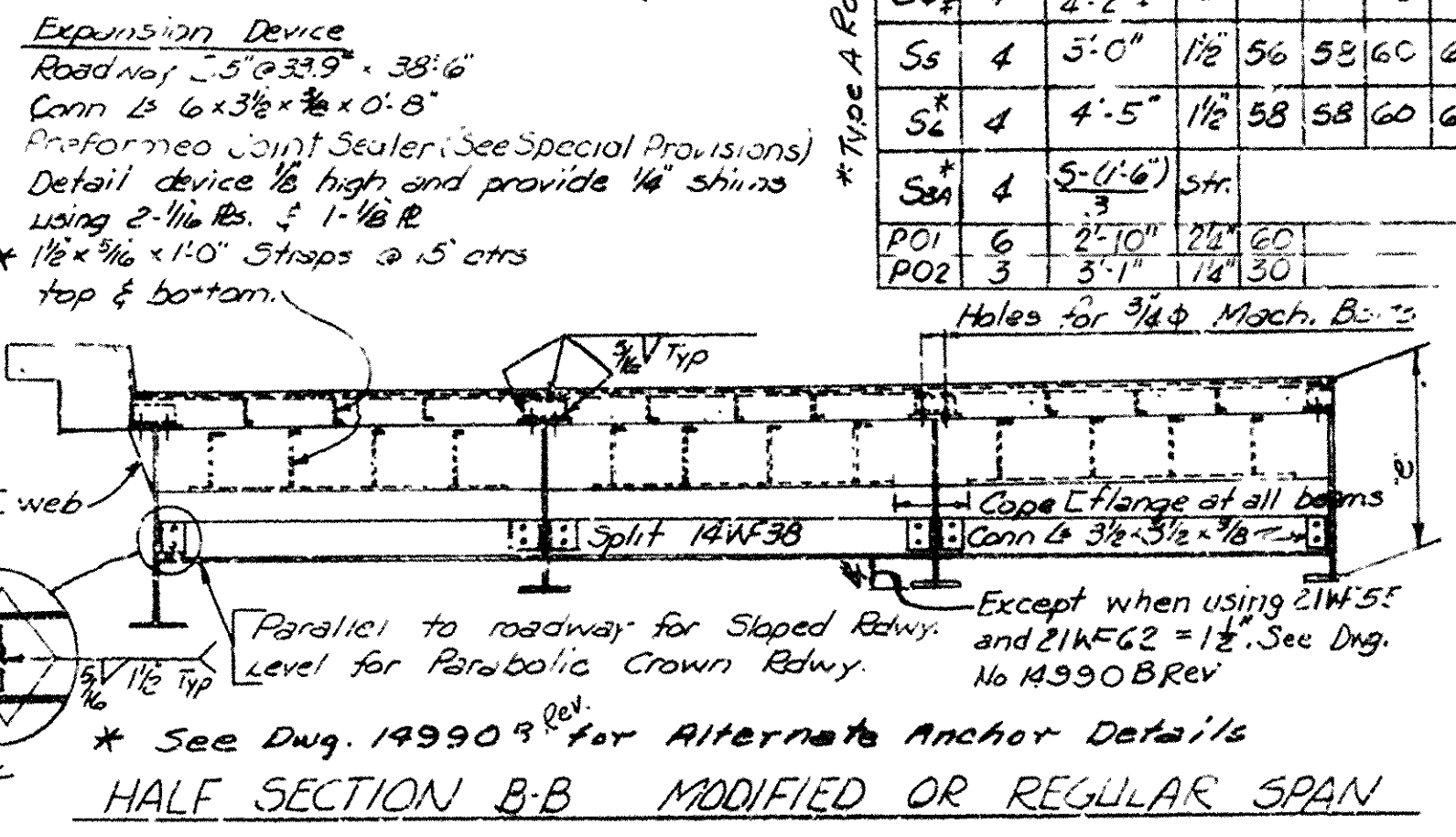
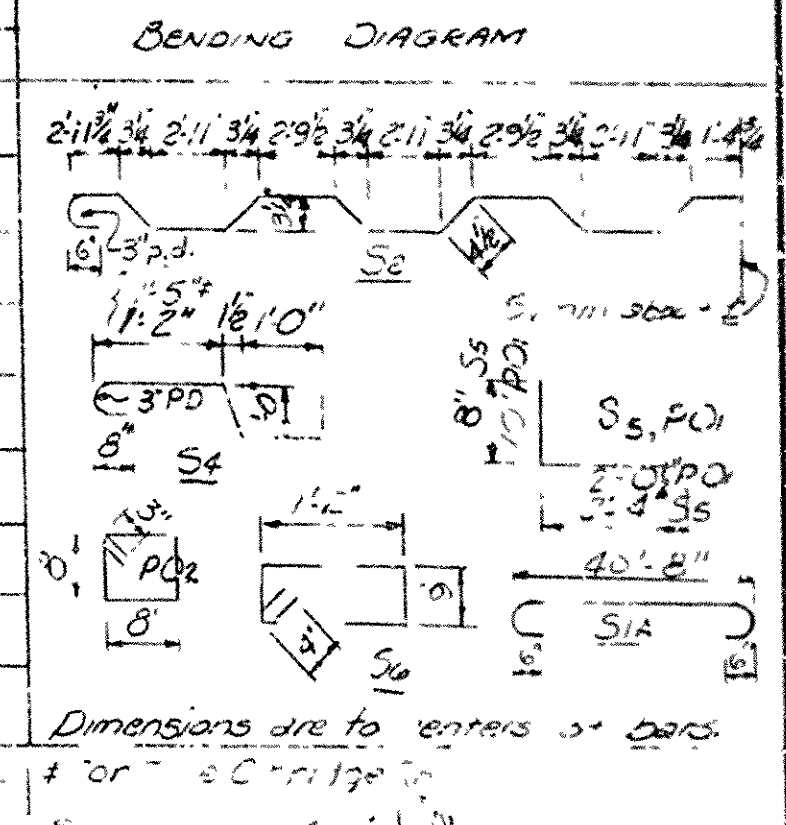
Revised; Column Ties, Bar Lengths, and Other Notes 9 Nov 66 - FJM



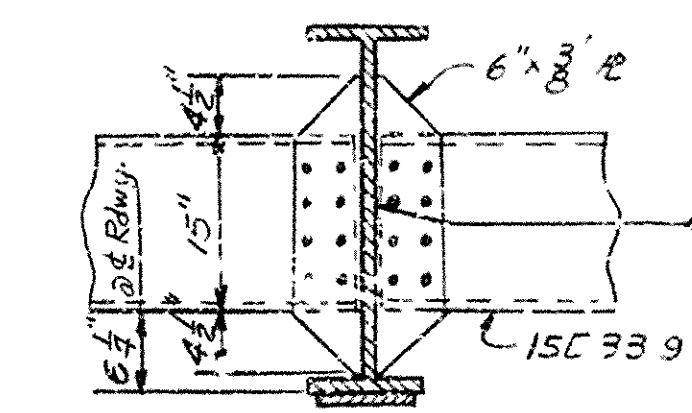
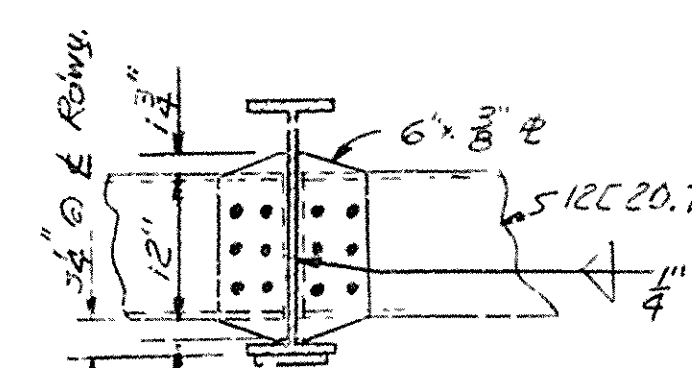
BAR LIST - ONE SPAN

MARK	SIZE	LENGTH	PAW	NUMBER REQUIRED EACH SPAN																				
				35	36	37	38	39	40	41	42	43	44	45	46	47	48	49	50	55	60	65	70	75
S1	6	20'-8"	STR	3	26	29	30	31	32	32	33	34	35	36	36	37	38	39	40	40	41	42	43	
S1A	6	42'-0"	3"	27	28	29	30	31	31	32	33	34	35	35	36	37	38	39	39	40	41	42	43	
S2	6	43'-0"	2"	27	28	29	30	31	31	32	33	34	35	35	36	37	38	39	39	40	41	42	43	
S3	4	5'-6"	STR	102																				
S3	4	9'-7"	STR	204																				
S3	4	9'-10"	STR	306																				
S4#	4	3'-11" 2'-2"	1/8"	112	116	118	122	124	128	132	134	138	140	144	143	150	154	158	160	176	182	186	224	240
S5	4	5'-0"	1/8"	56	58	60	62	62	64	66	68	70	72	72	74	76	78	80	83	98	104	112	120	
S6	4	4'-5"	1/8"	58	58	60	62	64	66	66	68	70	72	74	74	76	78	80	82	90	98	100	110	120
S6#	4	5'-0'-6" 3	STR	12																				
PO1	6	2'-10"	2#	52																				
PO2	3	3'-1"	14#	42																				

* Note: 4 Bars only.



SPAN		INTERIOR BEAM		EXTERIOR BEAM		POST SPACING		VARIABLES OF SHEAR CONNECTOR SPACING																		
SPAN LENGTH T.O.P.	BEAM SIZE	VER. P. SIZE	E. WITH WING	E. WITH WING	E. WITH WING	DEFLECTION WITH WING	CON. CONSTANT	f																		
									g	h	i	j	k	l	m	n	p									
1-5 41'-0" Regular	14" 6R	7"	9/16"	2-5 1/2"	1/2"	2-4 1/2"	68.6"	1/2"	22-0 2-5 1/2"	1/2"	9/8"	30-13'-8"	7'-6"	7'-8"	3	1 1/2"	13	4"	13	6"	10	8"	2	12"	0	
1-5 39'-0" Regular	14" 6R	6 1/2"	7/16"	2-0 2-3 3/8"	9/16"	9/16"	21-14' 62	62"	9/16"	23-3 2-2 3/8"	1/2"	1/16"	28-19'-6"	7'-3"	7'-2"	3	1 1/2"	12	4"	12	6"	9	8"	2	12"	6



NOTE: Stud shear connectors, granular flux filled, solid fluxed, or actual may be used in place of the channels shown at the following ratios: 3/4" diameter stud in place of 1.82 inches of channel, 7/8" diameter stud in place of 2.52 inches of channel. The studs shall be 4" long and automatically end welded to the beam flanges in accordance with recommendations of the manufacturer.

This drawing to be used with drawing 14990 B Rev

DESIGN SPECIFICATIONS: AASMO 1961

Live Loading: HS20 and Special Interstate Loading of 2 - 24,000 lbs axles spaced 6'4" on centers.

1. DEAD LOAD (Type A Rail)

Interior Beam

a. To W Beam (without const. ft.) 508 #/l + 1.15 (wt. of W) 613 #/l + 1.15 (wt. of W)

(with const. ft.) 508 #/l + 1.15 (wt. of W) 416 #/l + 1.15 (wt. of W)

b. To Composite Beam (without const. ft.) 110 #/l 110 #/l

(with const. ft.) 156 #/l 156 #/l

2. LIVE LOAD:

a. To En. Composite Beam 1.136 Wheels & Impact 1.123 Wheels & Impact

UNIT STRESSES:

Class 5 Concrete (M=10) 1,200 psi

Structural Steel (A-36) 20,000 psi

Reinforcing Steel 20,000 psi

4. $\frac{1}{2} \times \frac{1}{2} \times \frac{1}{2}$

a. To W Beam (without const. ft.) 508 #/l + 1.15 (wt. of W) 613 #/l + 1.15 (wt. of W)

(with const. ft.) 508 #/l + 1.15 (wt. of W) 416 #/l + 1.15 (wt. of W)

b. To Composite Beam (without const. ft.) 110 #/l 110 #/l

(with const. ft.) 156 #/l 156 #/l

DETAILS OF STANDARD

Revision - Changed numbers of S' # S2 bars 13,364 WEW
 Revised 11-1-63 10:44 AM 14 13,364 WEW (chkd. JEH)
 Revised. Added Tree S PRISME
 Re-1 5-5-65 RWM. cf FMH
 Revised: Added Joint
 Sealer 9-17-65 RWM

153-27

DETAILS OF STANDARD

35'-75" COMPOSITE I-BEAM SPANS

39'-0" CLEAR RDWY 0'-6" CURB

22" PARABOLIC CROWN OR 0.008% SLOPE

ROUTE SEC.

ARKANSAS STATE HIGHWAY COMMISSION

LITTLE ROCK, ARK.

DRAWN BY: UAS DATE: 10-7-68 SCALE: 3/8" = 1'-0" or as shown

TRACED BY: WCE DATE: 10-9-68

CHECKED BY: WCE DATE: 10-9-68

BRIDGE NO. 5027 DRAWING NO. 13506

DATE REVISION	DATE PLANNED	DATE REVIEWED	DATE PLANNED	FED. ROAD NO.	STATE	FED. AID PROJ. NO.	SHEET NO.	TOTAL SHEETS
				5	ARK.			
				JOB NO.	R60011		21	45
				① 5027A, B - QUANTITIES - 27651				

SCHEDULE OF BRIDGE QUANTITIES - JOB NO. R60011

BRIDGE NO.	CODE NO.	NAME PLATE TITLE	ITEM NO.	SP # 802	803	SP JOB R60011	SP JOB R60011	SP JOB R60011	SP JOB R60011	SP JOB R60011	SP JOB R60011
			UNIT	CLASS 3 CONCRETE	BOILED LINSEED OIL	CLOSED CELL FOAMED JOINT FILLER	BRIDGE DECK REPAIR	BRIDGE DECK OVERLAY	ARMORED JOINT	PAINTING EXISTING STRUCTURAL STEEL (TYPE I)	REPAIR OF EXISTING BENT CAPS AND COLUMNS
5027A	X071	CREEK @ STA. 5074+06	END BENTS 1 # 6	3.1	0.17				1140		
			FIVE 39'-0" COMPOSITE W-BEAM SPANS		16.90	246	42	845	1170		
			TOTALS FOR BRIDGE NO. 5027A	3.1	17.07	246	42	845	2310	76	10
5027B	X071	CREEK @ STA. 5076+16	END BENTS 1 # 6	3.1	0.17				1140		
			FIVE 41'-0" COMPOSITE W-BEAM SPANS		17.76	246	45	888	1170		
			TOTALS FOR BRIDGE NO. 5027B	3.1	17.93	246	45	888	2310	84	10
			TOTALS FOR JOB NO. R60011	6.2	35.00	492	87	1733	4620	160	20

SCHEDULE OF BRIDGE QUANTITIES
SOCIAL HILL - NORTH (4R)
HOT SPRING COUNTY

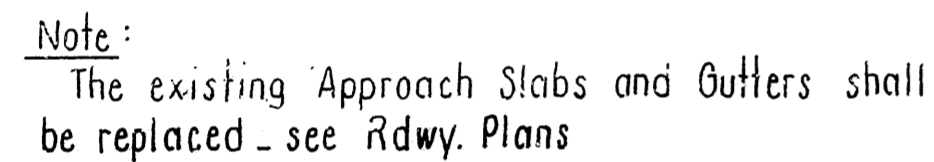
JOHN SAGE
DESIGN SUPERVISOR

ROUTE 1-30 SEC. 2
ARKANSAS STATE HIGHWAY COMMISSION
LITTLE ROCK, ARK.

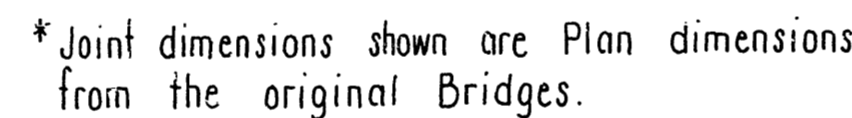
DRAWN BY: KMG DATE: 11 MAY 85
CHECKED BY: JHS DATE: 7-2-85 SCALE: NONE
DESIGNED BY: DATE:

BRIDGE ENGINEER

BRIDGE NO. 5027A & B DRAWING NO. 27651



All existing structural steel shall be painted see
SP Job RG0011-"Painting Existing Structural Steel."



Note:
All existing structural steel shall be painted - see
SP Job R60011 - "Painting Existing Structural Steel."

GENERAL NOTES

BENCH MARK: ELEVATIONS ARE BASED ON EXISTING BRIDGE PLAN ELEVATIONS.
ALL CONCRETE SHALL BE POURED IN THE DRY. ALL EXPOSED CORNERS SHALL BE
CHAMFERED 3/4" UNLESS OTHERWISE NOTED.

THE WORK WILL CONSIST OF REHABILITATING EXISTING BR. NO. 5027A AND 5027B BY PAINTING THE STEEL BEAMS AND PILE BENTS, OVERLAYING THE DECK, REWORKING THE EXPANSION JOINTS, AND REPAIRING END BENT BACKWALLS AND TURNOUT POSTS IN ACCORDANCE WITH THESE PLANS AND SPECIFICATIONS.

THE CONTRACTOR SHALL MAKE CHECK MEASUREMENTS AND MAKE ANY ADJUSTMENTS NECESSARY TO FIT THE NEW WORK TO THE EXISTING BRIDGES.

METHOD OF DESIGN: LOAD FACTOR (NEW CONSTRUCTION)

DESIGN SPECIFICATIONS: AASHTO STANDARD SPECIFICATIONS FOR HIGHWAY CONSTRUCTION, 1983.

CONSTRUCTION SPECIFICATIONS: ARKANSAS STATE HIGHWAY COMMISSION STANDARD SPECIFICATIONS FOR HIGHWAY CONSTRUCTION, EDITION OF 1978 AND APPLICABLE SPECIAL PROVISIONS.

FOR DETAILS OF EXPANSION JOINT REMODELING, SEE DWG. NO. 27653

HALF-SIZE DETAIL DRAWINGS OF THE BRIDGES TO BE REMODELED MAY BE OBTAINED FROM THE ARKANSAS STATE HIGHWAY AND TRANSPORTATION DEPARTMENT

DECK FINISH: THE CONCRETE BRIDGE DECK OVERLAY SHALL BE GIVEN A TINE
FINISH AS SPECIFIED FOR FINAL FINISHING IN SUBSECTION 302.23 FOR
CLASS 6 ROADWAY SURFACE FINISH.

LAYOUT FOR REMODELING
BRIDGE NO. 5027A & 5027B
SOCIAL HILL - NORTH (4R)
HOT SPRING COUNTY

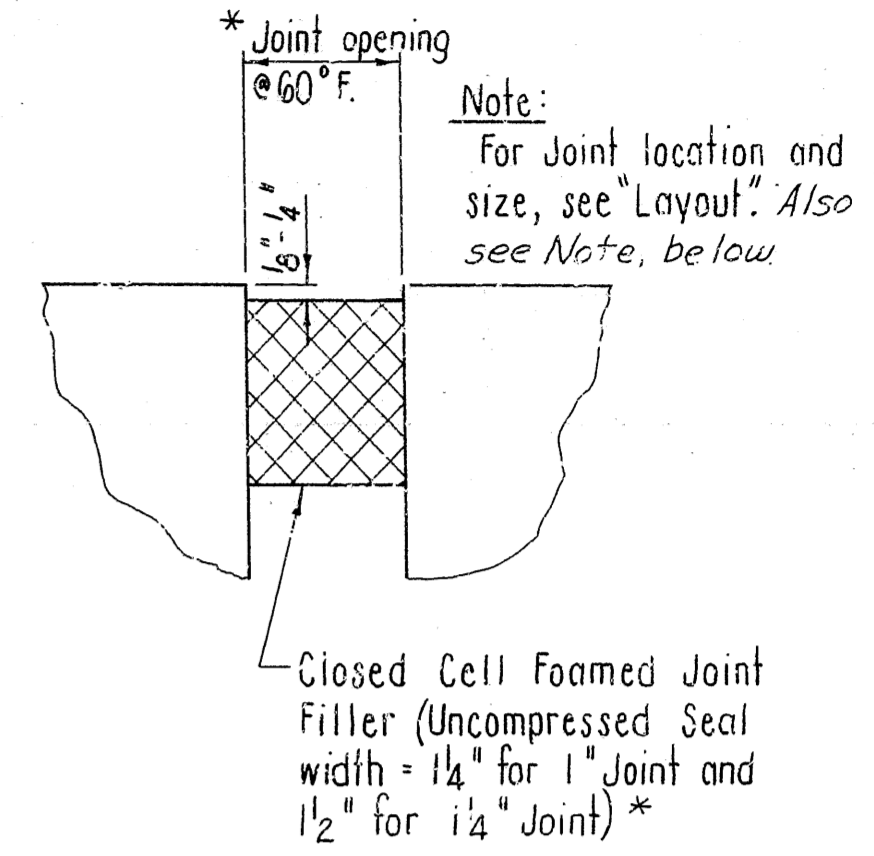
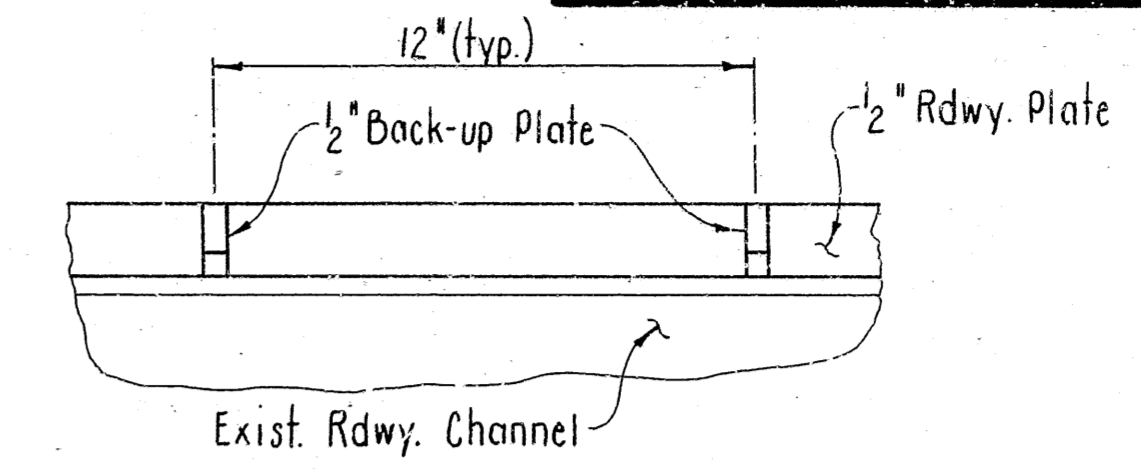
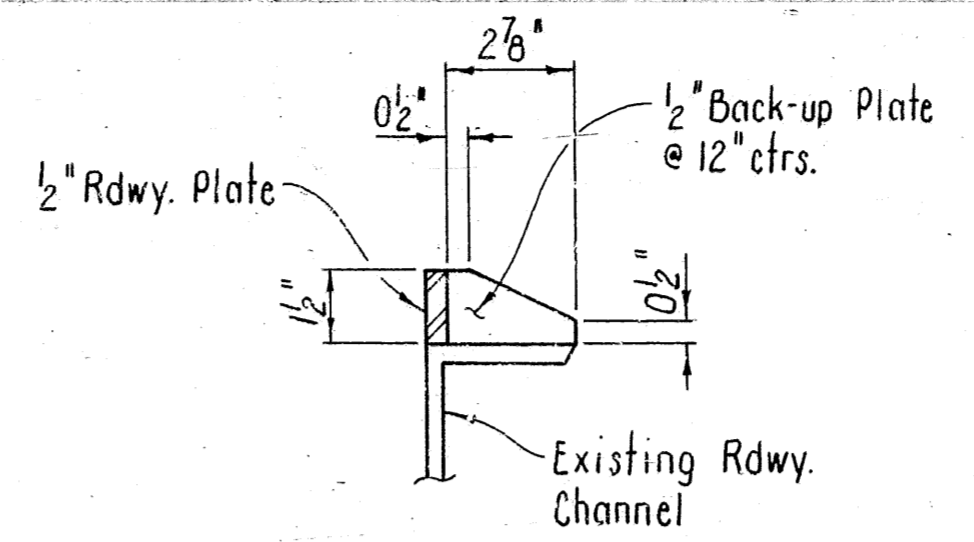
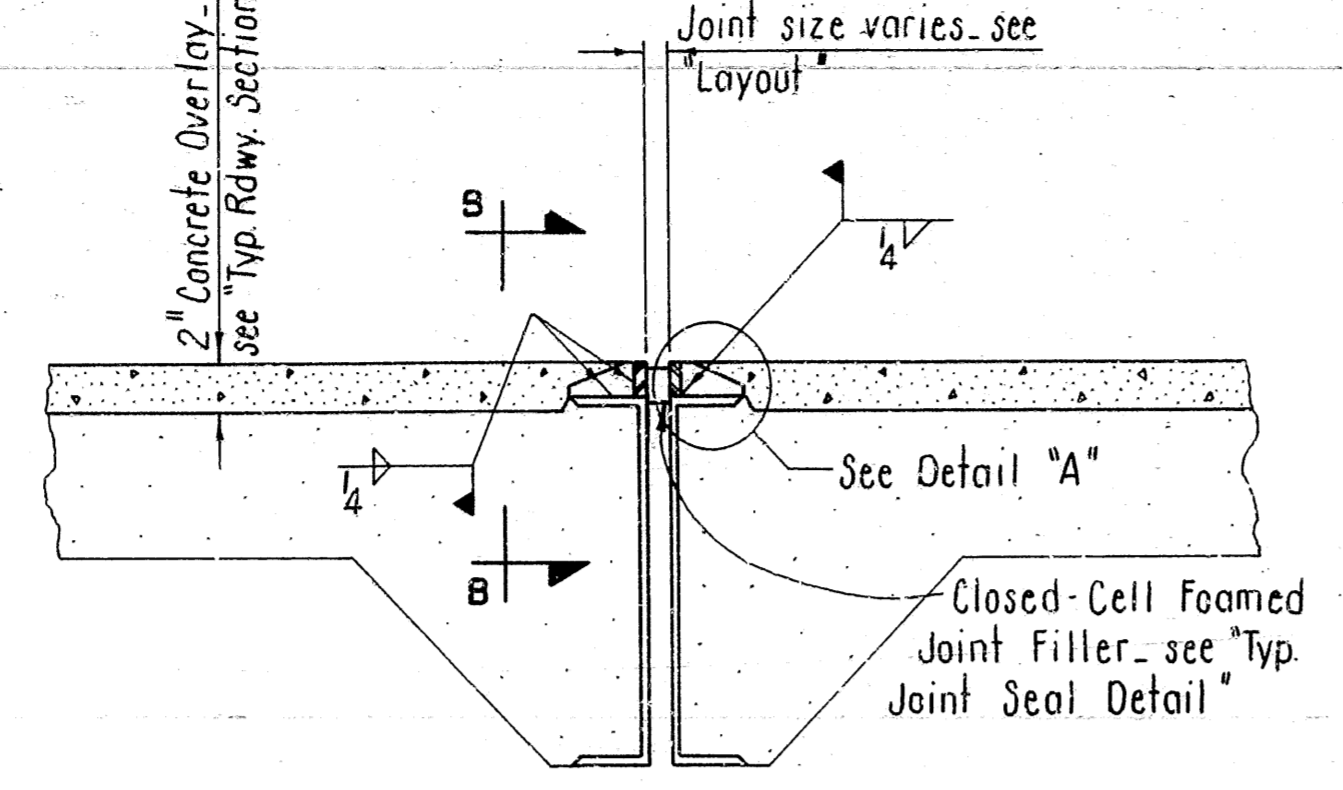
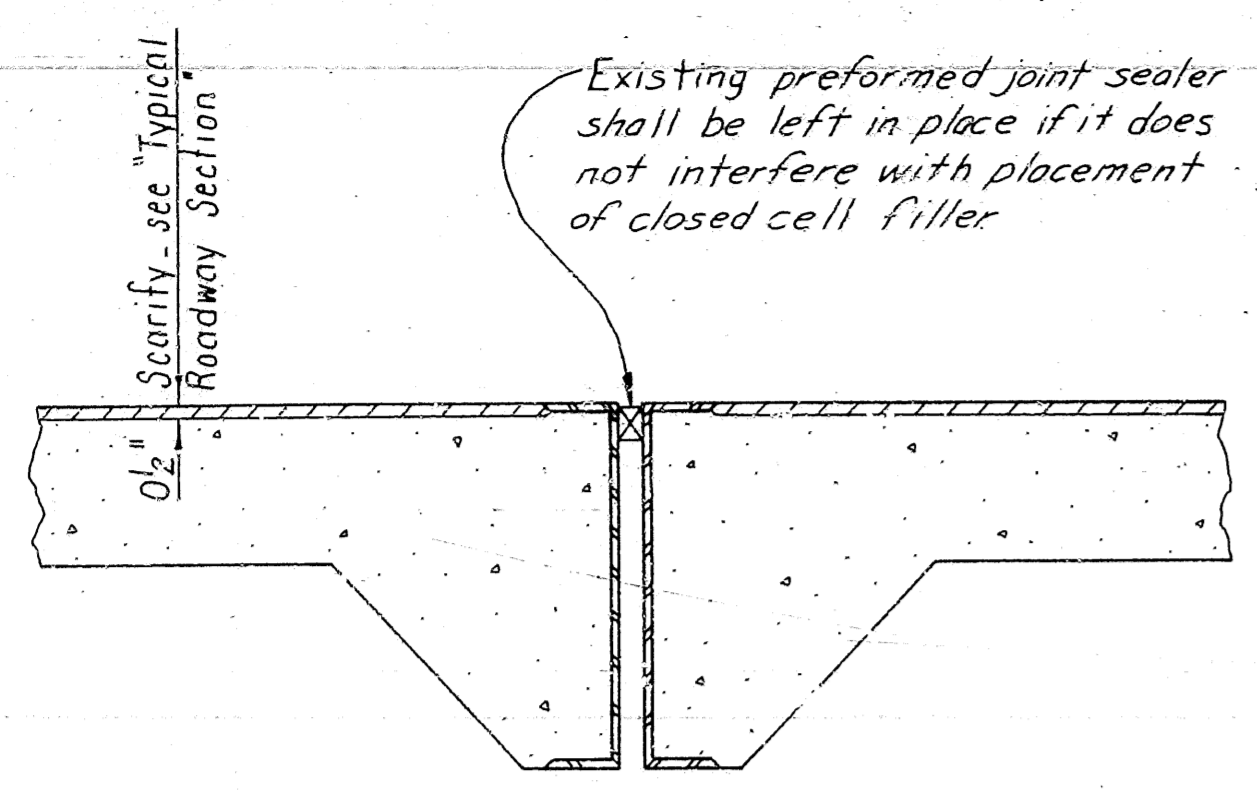
ROUTE I-30 SEC. 2
ARKANSAS STATE HIGHWAY COMMISSION

DRAWN BY: KMG DATE: 8 MAY 85
CHECKED BY: VAS DATE: 7-2-85
DESIGNED BY: DATE:

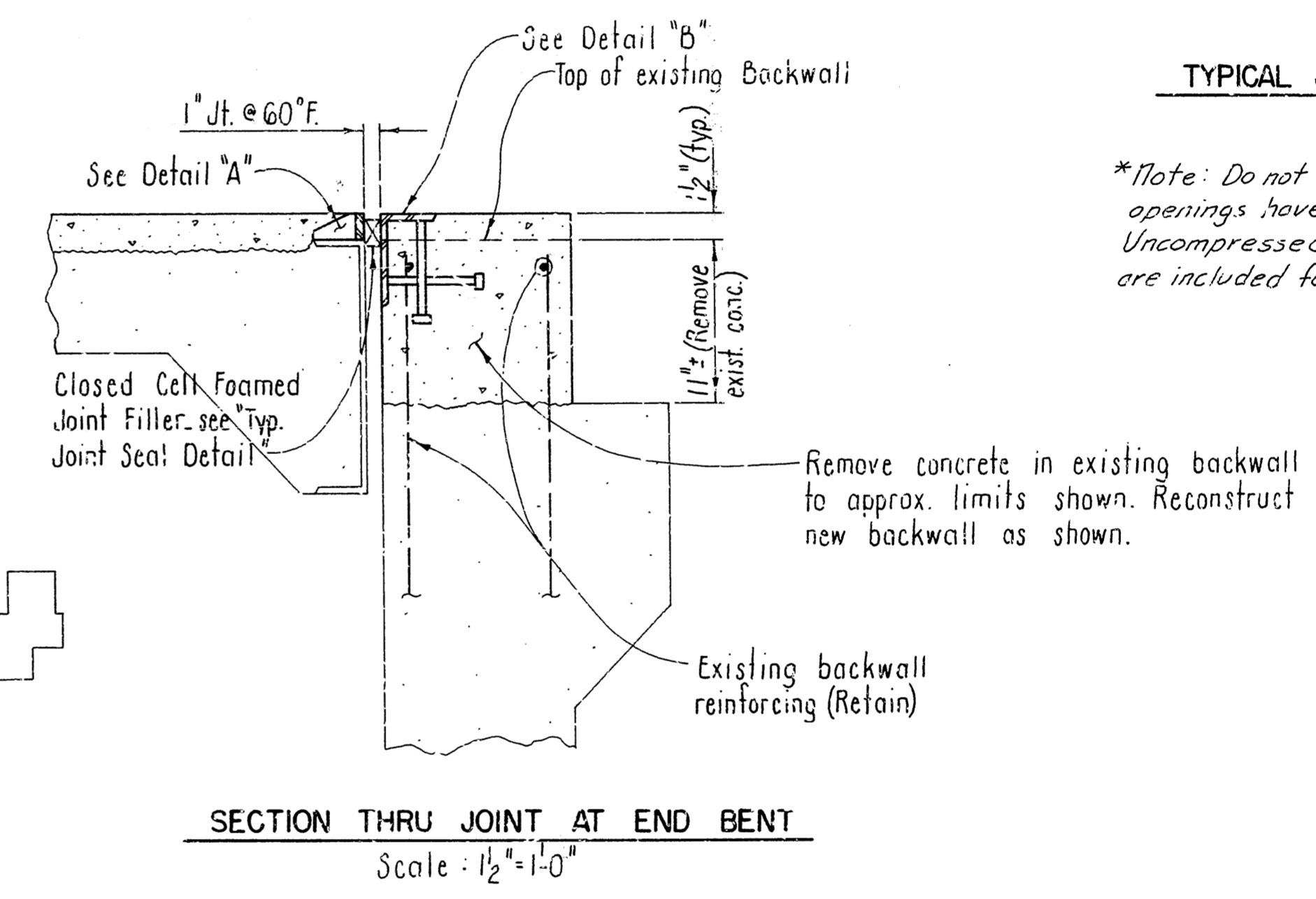
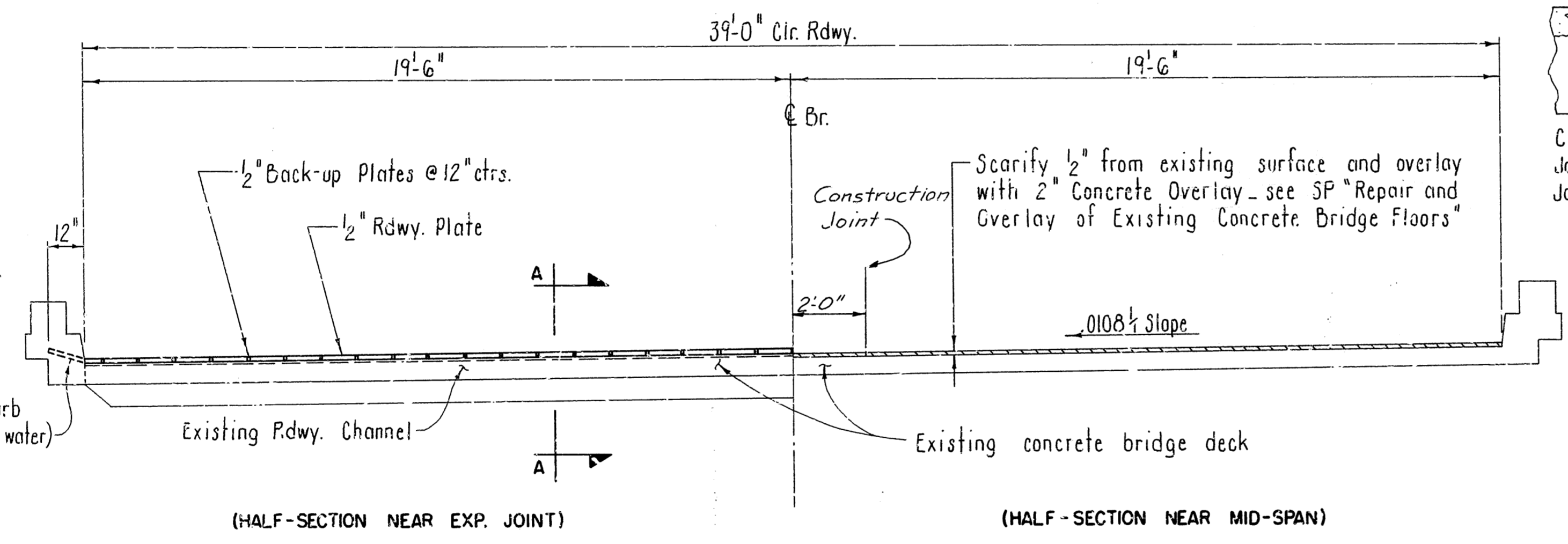
SCALE: 1" = 20'

BRIDGE NO. 5027A & B DRAWING NO. 27652

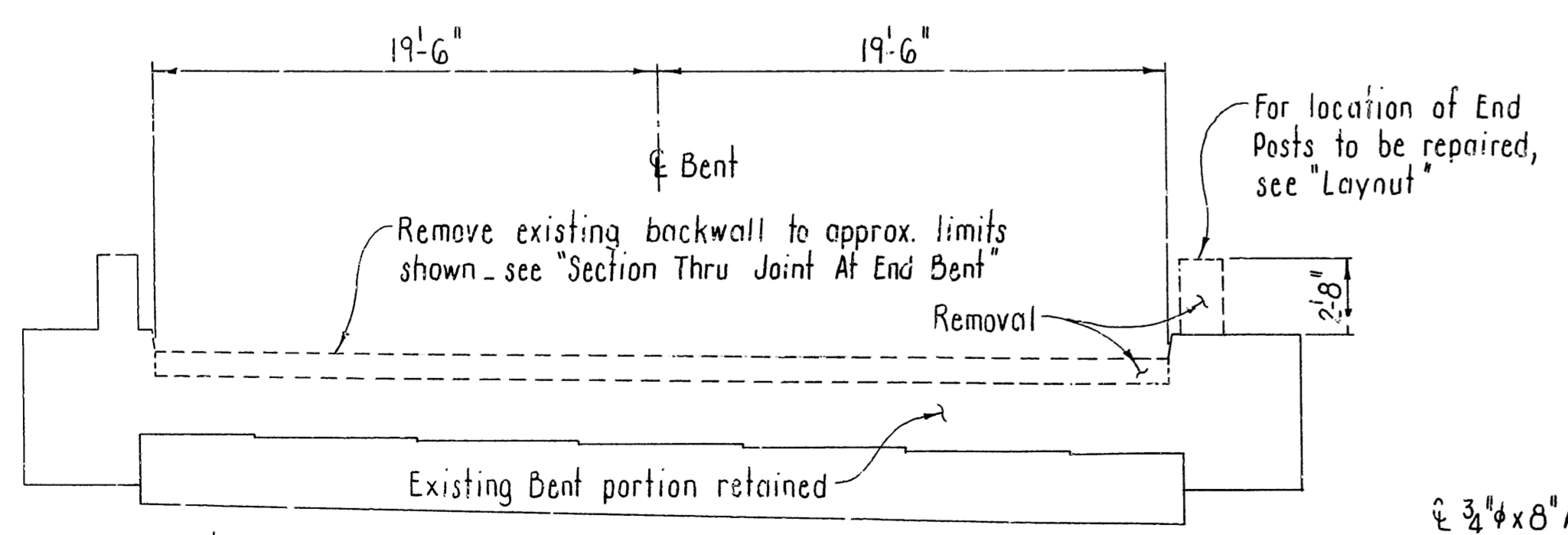
DATE	DATE	DATE	DATE	FED. ROAD NO.	STATE	FED. AID PROJ. NO.	SHEET NO.	TOTAL SHEETS
				6	ARK.			
				JOE NO.	R 60011	30	45	
5027 A, B DETAILS							27653	



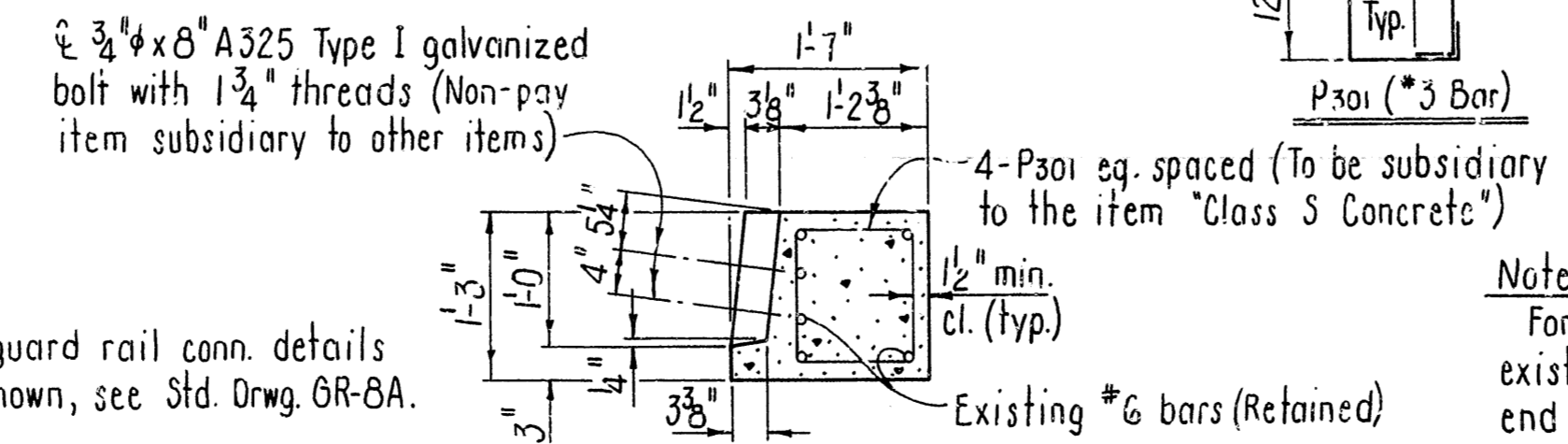
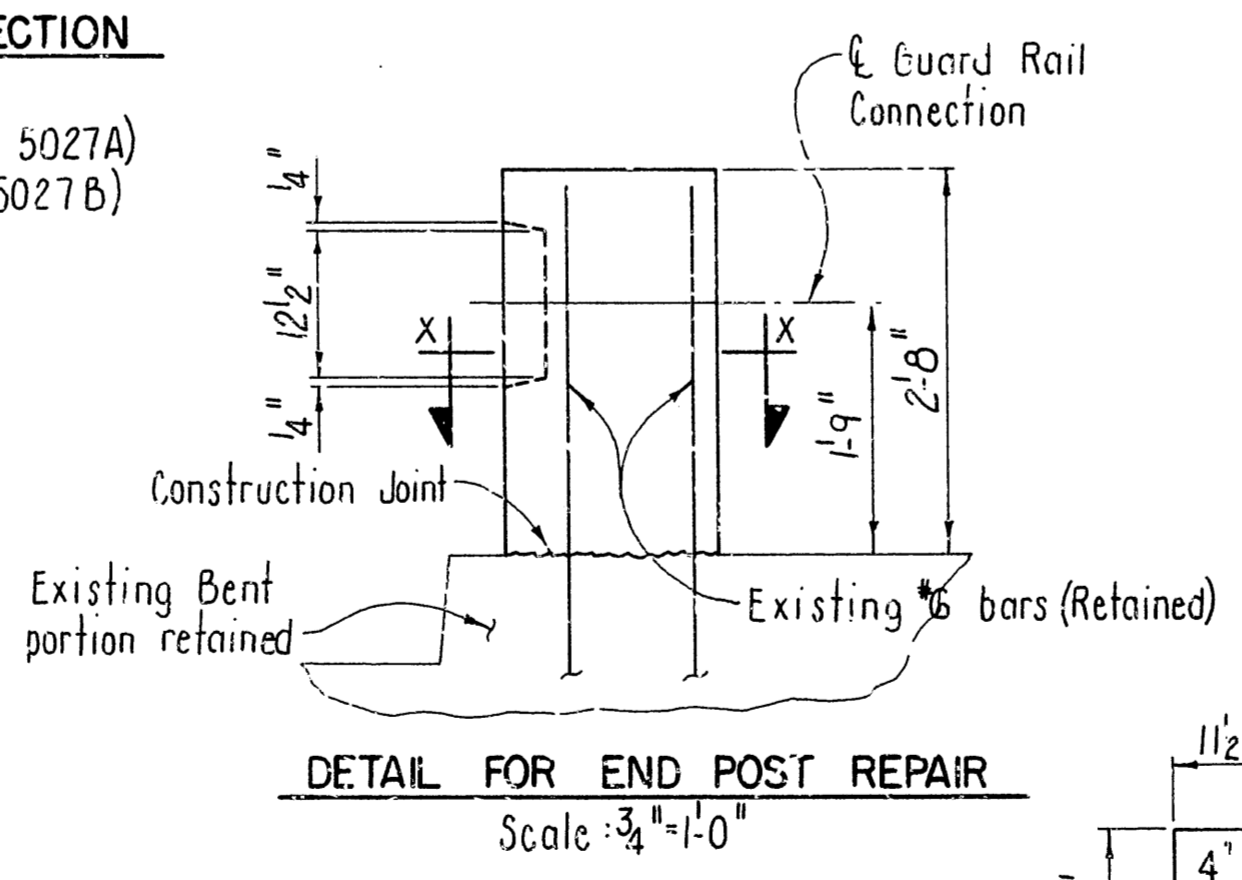
Note:
Dimension "D" shall conform to the recommendations of the seal manufacturer as approved by the Bridge Engineer.



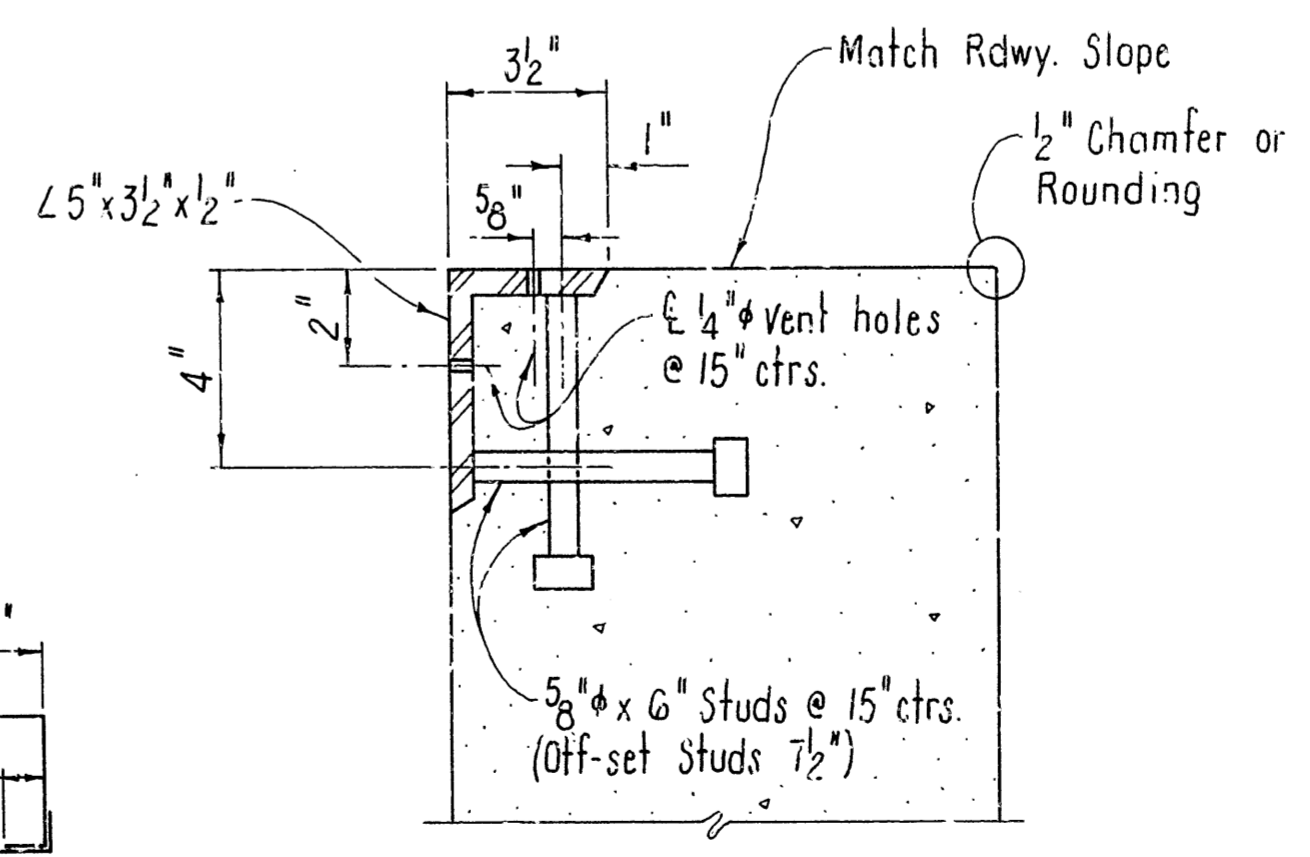
*Note: Do not order joint filler until joint openings have been measured in the field. Uncompressed seal widths listed above are included for bid purposes only



Note:
All existing reinforcing which projects out from cut lines shall be stripped, cleaned, and straightened, and incorporated in the new construction as shown on the Plans.



Note:
For guard rail conn. details not shown, see Std. Drwg. GR-8A.



Note:
For removal and replacement of existing Guard Rail at repaired end posts, see Rdwy. Plans.

DETAILS FOR REMODELING
BRIDGE NO. 5027A & 5027B
SOCIAL HILL - NORTH (4R)
HOT SPRING COUNTY

ROUTE 1-30 SEC. 2
ARKANSAS STATE HIGHWAY COMMISSION

LITTLE ROCK, ARK.

DRAWN BY: KMG DATE: 3 JUNE 85
CHECKED BY: CES DATE: 7-5-85 SCALE: AS SHOWN
DESIGNED BY: DATE:

BRIDGE NO. 5027A & B DRAWING NO. 27653

Paul R. Bunker
BRIDGE ENGINEER